

# COLLEGE OF EDUCATION NEWSLETTER | 2011

CHANGING TOMORROW THROUGH EDUCATION TODAY



MISSISSIPPI STATE  
UNIVERSITY<sup>TM</sup>





## GREETINGS FROM THE DEAN

The experiences that I encounter while working in the College of Education continue to reaffirm my appreciation for the dedication and hard work of our faculty, staff, and students. Our tagline “Changing Tomorrow Through Education Today” is not merely a slogan, but a description of what the people in the College do constantly. The pages of this newsletter are a testament to this fact and are but a subset of our total impact. Our mission is to provide instruction, research, and service to state, national, and international audiences which significantly impact educational attainment, economic development, and quality of life issues. In addition to the numerous individual successes occurring in the College of Education this year, we take great pride in the following accomplishments:

- A national ranking of 4th in the number of African-Americans granted baccalaureate degrees
- The growth in external funding
- Continued increases in enrollment
- The growth on the College of Education Faculty/Student Research Forum
- A positive process and performance review by the Mississippi Department of Education

As you read this, the College of Education will again be dealing with significant budget limitations. Accomplishments, such as those outlined in this publication, are extremely difficult in the current budgetary climate. However, the College of Education continues to excel through the kind generosity of our loyal alumni and friends. We humbly ask for your continued support.

Best Wishes,



Dr. Richard Blackbourn  
Dean and Professor



Blackbourn



## CHILDREN'S PROGRAM, FOLKSONGS COMBINE FOR SYMPHONY CONCERT

Special daytime concerts for children in grades K-5 were held on Oct. 1 by the Starkville-Mississippi State University Symphony Association.

Titled "Folksong Fantasia," the evening event in the Bettersworth Auditorium of Lee Hall featured selections from Vaughn Williams and Aaron Copland, as well as Brazilian composer Camargo Guarnieri and Spanish composer Joaquin Rodrigo.

The concert also included a special arrangement of 10 American folksongs by MSU music department head, Dr. Michael Brown, symphony conductor.

"Folksong Fantasia" was the second in the series of concerts for the 2010-11 season by the symphony, now in its 42nd year.

Three performances geared especially for children were also presented, in an annual event that draws thousands of youngsters from around the area.

The evening performance, under the direction of Dr. Brown, featured guest artists such as piano soloist Rosângela Sebba, a member of the MSU music faculty, and guitarist John Oeth, a sophomore music major and winner of the music department's 2010 concerto/ aria contest.



(Left) John Oeth, Michael Brown, and Rosângela Sebba

Selections for the event included Williams' "English Folksong Suite," Copland's "Variations on a Shaker Melody" and "Saturday Night Waltz" from "Rodeo," Guarnieri's "Choro para Piano e Orquestra," and Rodrigo's "Fantasia para un gentilhombre."

Oeth performed "Españoleta y Fanfare de la Caballeria de Napoles."

## ASSISTANCE GIVEN TO THE ACKERMAN SCHOOL DISTRICT

On Wednesday, February 9, **Drs. Debbie Wells** and **Cheryl Justice**, along with four graduate students from the College of Education and School Counseling programs, provided counseling support to the students, teachers, administrators, and community involved and affected by the aftermath of the school bus accident which claimed the lives of two Ackerman School District teachers. **Mrs. Amy Prisock**, from the Office of Clinical/Field-Based Instruction, Licensure, and Outreach, also went to Ackerman Junior High School to assist Megan Liddell, the elementary education teacher intern working in the classroom of one of the teachers involved in the accident.

Their volunteer spirit and dedication to the community illustrate the mission of Mississippi State University in its role as the "People's University" as well as the spirit of the College of Education. The Department of Counseling and Educational Psychology continued to monitor the situation and provided assistance as needed, and the Department and College of Education offered sincere condolences in the wake of this tragedy.



## FOURTH ANNUAL RESEARCH FORUM SHOWCASES EDUCATION RESEARCH

Federal funding and educational research topped the agenda for the College of Education's Fourth Annual Faculty/Student Research Forum at Mississippi State University on April 1, 2011, hosted by the College of Education and the Office of Research and Economic Development.

**Dr. Melody Musgrove**, Director of the U.S. Department of Education's Office of Special Education Programs, delivered the keynote address "Federal Funding as an Engine of Innovation."

"The forum provides an environment that promotes discussion and fosters collaboration with COE faculty and other colleges on campus," said Associate Dean for Research, **Dr. J. Elton Moore**.

In addition to Musgrove's presentation, other activities included a videoconference on funding opportunities available through the Institute of Education Sciences with **Dr. Elizabeth Albro**, Associate Commissioner of the National Center for Education Research's Teaching and Learning Division; a poster session featuring College of Education faculty, staff, and student research; and a lunch and awards presentation for best posters by graduate and undergraduate students. The top awards for graduate student posters were presented to Kinesiology students **Laura Hilton** and **Mareio Harris**, and Counseling and Educational Psychology student **Shane Warren**. The top undergraduate student award went to Kinesiology student **Lindsey Triplett**.



(Left) . Musgrove delivers the Keynote Address



(Below) . Research on display at the Forum

## GRANT BOOSTS REHABILITATION COUNSELING EDUCATION AND TRAINING



Dr. Charles Palmer

A long-term training grant from the U.S. Department of Education's Rehabilitation Services Administration is opening doors for students interested in pursuing master's degrees in rehabilitation counseling at Mississippi State.

With the initial RSA funding award of almost \$137,000, 10 students in the program will have their tuition paid and receive a \$300 per month stipend. In return, the students agree to work for one year with government-funded clients for each semester they receive the scholarship.

Awarded during a five-year lifecycle, the grant totals \$684,000 to the university, according to **Dr. Charles Palmer**, an Associate Professor of Counseling and Educational Psychology and the grant's principal investigator.

Dr. Palmer explained, "The federal government established this grant program in 1954 to fund the development of rehabilitation counselors, whose primary professional role is to assist people with severe disabilities in becoming productive, tax-paying members of society. Today, there is an ever-growing need for these professionals, and Mississippi State is committed to providing them the best education and career enhancement opportunities available."

Of the 50 million people in the U.S. who possess some level of challenged ability to perform a daily life activity, approximately 16 million are severely limited in their ability to interact productively. Rehabilitation counselors assist those individuals in developing the skills necessary to contribute to their own and their family's quality of life, Palmer said.

"This award is significant," said **J. Elton Moore**, Associate Dean for Research and Assessment for the land-grant institution's College of Education. "It will add to our ability to recruit top graduate students and help the state rehabilitation agency meet its personnel needs."

## GRANT BOOSTS TRAINING PROJECT BY MSU'S EARLY CHILDHOOD INSTITUTE

Focused on making professional development more accessible for rural and low-income childcare providers in Mississippi, a new Mississippi State University project will develop multimedia tools to demonstrate best practices in early care and education.

"With a \$750,000 grant from the U.S. Department of Education, the university's Early Childhood Institute will create an online library that shows best practices by demonstrating practitioners at work," said **Cathy Grace**, ECI's founding Director and a Professor in MSU College of Education. The institute will use nearly 10 years of data about strengths and weaknesses of Mississippi childcare facilities as the basis for the project.

"We will work with Mississippi State's University Television Center to go out into the field and tape short segments showing outstanding childcare practitioners,"

Grace explained. "These will be put in an online library for access by instructors, trainers, and coaches who work with childcare centers."

To expand access to professional development, resources also will be made available through training notebooks and accompanying DVDs.

**Elizabeth F. Shores**, the institute's Associate Director for Research, communications, and national initiatives, will direct the project with assistance from **Melina Vaughan** and other ECI staff members.

Titled "Bridges to Quality: The Mississippi Early Childhood Professional Development Project," the effort will be tested in focus groups in about 10 months. It also will include related studies of how to improve access to credential and degree programs for childcare workers, as well as the success of practitioners in the programs.

“This award demonstrates the confidence that the U.S. Department of Education, Mississippi’s congressional delegation, and the university administration have in ECI’s leadership of the early childhood sector in Mississippi,” said **Richard Blackburn**, Dean of MSU’s College of Education. “Thanks to this funding, we will be able to continue to expand professional development materials, on-site coaching, and other resources to help raise the quality of early education for Mississippi’s children.”

While “Bridges to Quality” focuses specifically on Mississippi childcare providers, Shores said, “We believe it could be effective in any state with a significant population of low-income and rural childcare providers.”

She added that ECI will seek a second year of funding to continue and expand the effort.

Established in 1999 as a program of MSU’s College of Education, the Early Childhood Institute provides training, technical assistance, and applied research for improved quality and accessibility of early care and education across Mississippi.

## LEAP GRANT CONTINUES TO HELP MISSISSIPPI ADDRESS TEACHING SHORTAGE

The College of Education’s Learning and Educating through Alternate Programs (LEAP) program, established in 2009, awards scholarship funds to Masters of Arts in Teaching-Secondary (MAT-S) students who qualify to teach in one of the 42 LEAP-partnered school districts around the state of Mississippi. The program is funded by a Transition to Teaching grant through the U.S. Department of Education and was designed by a committee of faculty members including **Dr. Matthew Boggan**, Associate Professor of Educational Leadership at the MSU-Meridian Campus, and **Dr. Terry Jayroe**, Associate Dean of the College of Education on the MSU main campus. **Drs. Susie Burroughs**, Professor; **Connie Forde**, Department Head, Instructional Systems and Workforce Development; **Margaret Pope**, Associate Professor, **Dinetta Karriem**, Assistant to the Dean; and **Linda Cornelious**, Professor. “The committee has worked diligently over the past two years to ensure the success of the LEAP grant,” said Boggan. “MSU is blessed to have such dedicated faculty and staff as a part of the team.”

The LEAP program staff include **Susan Steward**, Project Coordinator; **Candace Weed**, Research Associate; Lauren Holifield, Research Associate; and Joni Branning, Office Associate (MSU-Meridian). “We were fortunate to find someone like Susan Steward who has experience in coordinating federal grants to serve as our project coordinator. She does a great job as well as her staff,” said Boggan.

Boggan communicated his appreciation to Dr. Terry Jayroe for her dedication and guidance with this grant. “She takes care of many LEAP issues on the main campus, and I feel fortunate to have her. Dr. Jayroe has much expertise with grants, and her guidance has been invaluable to the success of the LEAP grant.” Boggan noted that this grant is an opportunity for MSU to create stronger relationships with the school districts. He commented that the LEAP grant is a great opportunity to bridge university-school district relations as well as provide quality teachers to our district partners. According to **Dr. J. Elton Moore**, Associate Dean of Research in the College of Education, “The LEAP grant has had a significant impact on our ability to offer a recruitment and alternative certification program for high-need rural local education agencies (LEAs) throughout Mississippi.” In addition to the MAT-S track, the program was given approval this year by the U.S. Department of Education to initiate a certification-only track. Qualified students in the certification-only track may be able to receive scholarship funds through LEAP. For more information on the LEAP scholarship, contact Susan Steward (662-325-0527; [sseward@colled.msstate.edu](mailto:sseward@colled.msstate.edu)) or Joni Branning (601-484-0224; [jbranning@meridian.msstate.edu](mailto:jbranning@meridian.msstate.edu)).





## T. K. MARTIN CENTER PROGRAM 'EXPRESSES' IMPORTANCE OF CREATIVITY



Shannon Herod looked at the sky blue and grass green canvas with a giant rainbow and a wooden cabin and knew her art piece wasn't finished. She had envisioned an old log in the foreground, with flowers growing near it.

"I've got more to do to it," said the painter and poet. With an artist's sensitivities, she embraces her unique perspective.

Born with cerebral palsy, Herod understands that many people can't appreciate her traits because they tend to focus on what she is unable to do. Transported by motorized wheelchair and unable to use her arms, the 47-year-old Columbus native resides at a local facility for persons with

developmental challenges—and few opportunities to showcase her special creative spirit.

Fortunately, through Express Yourself, a program at Mississippi State's T. K. Martin Center for Technology and Disability, she and others with severe disabilities get to do what the name implies, express themselves as artists.

Judy Duncan, Martin's case manager, has come to know many people with more severe challenges. She said she sees them all as treasure chests, just waiting to be unlocked.

"Many of our artists are told how to do everything in their lives," Duncan explained. "Express Yourself



(Left) MSU Express Yourself artist Shannon Herod communicates with tracker Barbara Boydston about her painting. (Right) Janey Linley, with daughters, Megan and Paige, with their favorite Express Yourself painting. (Photo by: Beth Newman)

allows them to explore their independent, creative sides."

The university center has helped dozens of people connect with their "inner artists" who otherwise couldn't. The program follows principles developed by abstract artist Tim Lefens more than a decade

ago to involve able-bodied people acting as "hands" for disabled people.

Often, an artist uses laser lights to guide a "tracker," who is acting as the painter's hands. Many who participate in the program cannot verbally communicate with their trackers. While each relationship is different, they typically develop a unique communication to produce the finished work. Lefens created the New Jersey-based Artistic Realization Technologies. Most often called A.R.T., the nonprofit organization works to promote art techniques through 27 studio programs around the country.

Duncan started MSU's program about five years ago



after Lefens spoke on campus. While Lefens-inspired, Express Yourself at the T. K. Martin Center remains an independent operation.

Though his organization currently is opening new programs in Idaho, Virginia and New York, Lefens said he regularly encounters resistance in some locales.

“Luckily there are places like T. K. Martin where they had the vision to grab on to the breakthrough and run with it,” he observed.

Twice a month, Herod and other artists visit the campus studio for 90-minute sessions. Most reside

at a Starkville developmental center; others, in nearby communities. Thalamus Brown, another developmental center resident, said he didn’t enjoy the experience at first and stopped going. One of Brown’s best friends and roommate, T. J. Bovastro, continued to be a regular participant, however.

Bovastro, who dubbed himself “Sir Mix a Lot” for his particular creative style, died before completing his last canvas. After the funeral, Duncan asked Brown if he could return to the studio to complete Bovastro’s effort.

The finished work now is on display at the center’s entrance, and Brown continues to paint. Asked how

he feels about expressing himself through art, his eyes widened as he explained what the experience meant to “Sir Mix a Lot.”

“I keep coming to keep him here,” said Brown, also born with cerebral palsy. “It also teaches me about myself.”

MSU’s program currently receives funding from the Mississippi Arts Commission. Members of the public also are permitted to purchase the work, with proceeds from each sale split between the center and the artists. Dozens of their paintings line the center’s hallways.

Janey Linley was one who saw the paintings when 6-year-old daughters Paige and Megan attended the center. Paige has cerebral palsy.

While Linley now owns four paintings, one featuring two figures with a heart between them has special meaning. She said it reminds her of love for her daughters, and all with cerebral palsy. “I don’t see their limitations,” Linley said. “I see abilities they have.”

Shannon Herod shared a story that occurred recently at her residence. She said a tear rolled from her cheek as she discussed her life, how others don’t see beyond her wheelchair and physical limitations, how so many consider her less than a person. A smile replaced the tear as she spoke about her feelings when someone purchases a painting. It makes her feel empowered, she added.

“I might have cerebral palsy, but I won’t let anyone tell me what I can’t do,” she said.



## PHI KAPPA PHI AMONG ELITE CHAPTERS OF EXCELLENCE

Mississippi State's chapter of the honor society Phi Kappa Phi is one of only five in the country to receive the national Chapter of Excellence award, recognizing the organization's outstanding abilities in promoting academics and service.

At the national organization's biennial convention held recently in Kansas City, Mo., the MSU chapter also was the only one to receive the honor for two consecutive years. Membership in the local chapter of more than 200 members is by invitation only to the top 7.5 percent of juniors and top 10 percent of seniors and graduate students. Founded in 1897, Phi Kappa Phi is the nation's oldest, largest and most selective all-discipline honor society.

**Dr. Missy Hopper**, MSU Chapter President, said, "We received Chapter of Excellence status through a strong group effort between involved chapter officers, faculty, and students. To be recognized by the national organization for being 'best of the best' in such a prestigious organization is an unprecedented honor for our chapter."

The Chapter of Excellence distinction recognizes Mississippi State's chapter as a thriving organization that meets frequently, holds annual initiations, and applies repeatedly for Phi Kappa Phi's select scholarships, grants, and fellowships.

"Not only did we meet these criteria, but we also regularly attended training sessions and conventions and maintained a good public relations stance," said Hopper, an assistant professor in the Department of Curriculum, Instruction, and Special Education.

Dr. Perry A. Snyder, the national society's executive director, said, "Those chapters that have earned this status are led by committed officers who give generously of their time and talent to honor outstanding students. Officers of award-winning chapters live out their personal commitment of honor and excellence through Phi Kappa Phi."

Serving as officers along with Dr. Hopper are Forestry professor Dr. Don Grebner, Vice President; Accountancy Associate Professor Dr. Noel Addy, Treasurer; Forestry Professor Dr. Steve Grado, Secretary; Brad Reaves, First Student Vice President; Matilda Asuzu, Second Student Vice President; Kaitlin Lewis, Student Public Relations; and Computer Science and Engineering Interim Head Dr. Donna Reese, Former President.

Phi Kappa Phi annually inducts approximately 30,000 students, faculty, professional staff, and alumni. The society has chapters at more than 300 select colleges and universities in North America and the Philippines.

## RRTC WINS COMPETITIVE \$4.25-MILLION GRANT

A five-year, \$4.25-million federal grant will allow Mississippi State's Rehabilitation, Research and Training Center on Blindness and Low Vision (RRTC) to initiate and expand research into systems change, education, training, and outreach activities that foster employment of people who are blind or visually impaired.

As the winner of the highly competitive grant, the university's RRTC will receive \$850,000 this year and annually through 2015 from the National Institute on Disability and Rehabilitation Research. The funding will support the center's efforts to increase competitive opportunities and

outcomes for blind or visually impaired individuals in the job market.

The MSU RRTC is the nation's only NIDRR-funded center focused on employment-related issues faced by people who are blind or visually impaired, according to research Professor and Interim Director **Brenda Cavanaugh**. The center's successful grant application includes projects that will identify and evaluate current employment practices and outcomes, opportunities to design and field-test innovative interventions to improve outcomes, chances to assess and make recommendations for updating and improving aspects of a longstanding

federal business entrepreneur program, and opportunities to perform usability studies and consumer/user evaluations of accessibility of office equipment to the blind or visually impaired.

“The RRTC does outstanding work and is nationally renowned. This award will allow the center to continue to have a positive impact on individuals who are blind or visually impaired throughout the state and nation,” said **Dr. Richard Blackbourn**, Dean of MSU’s College of Education.

The center has been housed within the College of Education at MSU since 1981, where it has been awarded approximately \$20 million from NIDRR and other agencies

to support research into a range of areas related to blind or visually impaired employment, including barriers to employment, the unique challenges and needs experienced by transition-aged youth and persons who are deaf-blind (deaf-blind elders, in particular), and the impact gender and race/ethnicity have upon employment outcomes for persons who are blind or visually impaired.

Members of the Mississippi State University Rehabilitation, Research and Training Center on Blindness and Low Vision team include (front, l-r) Michele C. McDonnall, Lisa Ashmore, Stephanie Hall, Miranda Morris, Brenda Cavanaugh; and (back, l-r) J. Martin Giesen, William Sansing, B. J. LeJeune, Adele Cruden, Mary-Kay Belant, and Angela Shelton.



## CREATIVE RESEARCH-BASED SCIENCE TEACHERS FOR A COMPETITIVE TOMORROW

The U.S. Department of Education’s Teachers for a Competitive Tomorrow – Baccalaureate (TCT-B) is a five-year, \$1,196,555 million dollar grant awarded to Mississippi State University, which is one of five universities in the nation to receive this grant. With help from the MSU Department of Curriculum, Instruction, and Special Education, the MSU College of Education; and the MSU College of Arts & Sciences, TCT-B has funded numerous research experiences for MSU undergraduate students, local high school science teachers, and high school students for the 2010-2011 academic year.

In summer 2010, 10 local high school science teachers and several undergraduate Secondary Education majors benefited from a week-long workshop at the MSU Starkville campus on

integrating research-based learning into the high school classroom. Workshop participants collaborated in research-based hands-on learning led by the TCT-B grant Principal and Co-Principal Investigators from the departments of Curriculum, Instruction and Special Education, Biology; Chemistry; Geosciences; and Physics. **Dr. Burnette Hamil** (PI), Dr. David Chevalier (co-PI), Drs. Debbie Beard, and Svein Saebo (co-PIs), Dr. Renee Clary (co-PI), and Dr. Jim Dunne (co-PI), respectively, demonstrated through presentations and interactive seminars how to incorporate research-based learning in the classroom to encourage interest in the sciences.

Thanks to continued funding from the TCT-B grant, co-PI Dr. David Chevalier has been busy this

year bringing hands-on research experiences to Mississippi’s students. Dr. Chevalier partners with two local high schools to conduct experiments with the schools’ biology classes on the plant *Aradopsis Thaliana*. Students have the opportunity to work with Dr. Chevalier and their classroom teacher to perform current, relevant experiments in the field of biology using the scientific method.

TCT-B undergraduate research assistants and their research mentors are enjoying a productive year. Jessica Kelly (junior, secondary education and biology double major) and her research mentor and TCT-B co-PI, Dr. Clary, have worked together at the MSU Dunn-Seiler Museum to host two statewide K-12 science competitions and to provide museum tours and fossil excavations for over 60 K-12 students



this academic year. Jessica presented their research on Geoscience Education Outreach at the Mississippi Academy of Sciences' Annual Conference in February at the University of Southern Mississippi in Hattiesburg. Dr. Clary presented the outreach activities at the Geological Society of America National Conference in Denver, CO. This research was also presented at the Fourth Annual College of Education Faculty/Student Research Forum.

In February, Sumer Barakat (sophomore, chemistry and secondary education double major) and Lauren Stutts (sophomore, chemistry and secondary education double major) presented their work with TCT-B co-PIs Drs. Debbie Beard and Svein Saebo on theoretical studies of acetals at the University of Memphis' 31st Annual Undergraduate Chemistry Research Conference. Barakat and new TCT-B research assistant Rachel Calvary (junior, secondary education and chemistry double major) presented their research on acetals in April at the Georgia Southern Undergraduate Research Symposium. Barakat and former TCT-B research assistants Tyler McLaurin and Hunter Murray submitted research posters for the Fourth Annual College of Education Research Symposium in April. Barakat also presented her research at the MSU Undergraduate Research Symposium on April 21, 2011. Garrett Dorman (junior, physics and secondary education double major) conducts research with physics professor Dr. Jim Dunne to develop a smart table using Wii technology.

Principal investigator, **Dr. Burnette Hamil**, Professor in the Department of Curriculum, Instruction, and Special Education, has coordinated the efforts of all involved in the TCT-B program and thus enhanced the science learning experiences of 24 undergraduate students, 21 local secondary science educators, and approximately 3,600 elementary and secondary public school students. Dual enrollment in secondary education and the sciences has more than doubled since the program's inception. The TCT-B program faculty and staff, including new Project Coordinator **Jennifer Weir**, look forward to continuing to recruit future science teachers from both colleges/universities and K-12 students, to place qualified science teachers in high-needs schools and to provide high quality research-based laboratory experiences for students and teachers.



Students dig for fossils with Dr. Clary



Students work at TCT-B's 2010 Summer Workshop

# COLLEGE OF EDUCATION HOLDS AWARDS CONVOCATION

The College of Education held its annual Awards Convocation in April in the ballroom of the Colvard Student Union. Dr. David Cole, President of Itawamba Community College and a College of Education Alumnus, was the keynote speaker. A number of faculty and staff members were recognized for their service to MSU.



Dr. David Cole, President of Itawamba Community College, and Dean Richard Blackbourn.



Dr. April Heiselt, winner of the Lucinda Rose Teaching Award, is congratulated by Blackbourn.



Wanda Brett, winner of the Betty Purvis Staff Award, is congratulated by Blackbourn.



Dr. Anthony Doggett, winner of the Herbert Handley Research Award, is congratulated by Blackbourn.



Dr. Julia Porter, winner of the Clyde Muse Service Award, is congratulated by Blackbourn.



## HOPPER'S NEWLY-RELEASED CHILDREN'S BOOKS



Hopper

**Missy Hopper**, Associate Professor in the Department of Curriculum, Instruction, and Special Education, signed copies of her newly-released children's books on September 1 in Mitchell Memorial Library's John Grisham Room. The event was open to the public, and a reception immediately followed.

*The Adventures of John Hart and Theodore Roosevelt Hollumway Jones Chasing Bandits* and *Peggy Sue and the Pepper Patch* were penned after hearing tales of her parents' escapades while growing up in the rural south. Franklin, Tennessee-

based Providence House published the non-fiction books, which are geared for elementary students. *The Adventures of John Hart and Theodore*

*Roosevelt Hollumway Jones* is a tale of two young boys' mischievousness amongst the cotton fields and during the long summer days in the Deep South. The book is illustrated by Starkville resident Nel Slaughter. *Peggy Sue and the Pepper Patch* is illustrated by Starkville resident CeCelia Bowden and depicts the adventures of Hopper's mother, Peggy Sue, helping Mr. Henry pick peppers from the garden. A song and dance are included in the 32-page book.

Hopper, a native of the Mississippi Delta, holds a bachelor's degree from Mississippi State University, her master's and educational specialist degrees from the University of Memphis, and a doctorate from the University of Tennessee. At Mississippi State, she is responsible for the Secondary English Education program. Her research interests include content area reading, technology use in secondary English classrooms, and online instruction.

## MINI-GRANT PROGRAM FUNDS COLLABORATIVE RESEARCH

An innovative mini-grant program funded by the Office of Research and Economic Development at Mississippi State is bringing together researchers from around campus and across disciplines to foster cross-college collaboration, according to the university administrator overseeing the effort. "We have a lot of good proposals and really good teams," said Ray Vaughn, Associate Vice President for Research and Giles Distinguished Professor of computer science and engineering. "We are excited about the interest in the cross-college grant program and expect it to yield funded research proposals, which will make the initial cost well worth the investment."

A \$2,000 grant to each of the 31 teams will support the initiation of new proposals, as well as help enhance multi-disciplinary collaboration of existing projects. "As the state's flagship research institution, we are committed to growing our research portfolio for the benefit of every Mississippian," said

Vice President for Research and Economic Development David Shaw. "We believe that investments like the cross-college research grants will help us achieve that goal by giving faculty members additional opportunities to share ideas and work together."

Participating teams from the College of Education listed alphabetically by principal investigator with department information and proposal title are: **Stamatis Agiovlasitis**, Assistant Professor of Kinesiology, Collaboration between the Bio-Behavioral Laboratory and Center for Advanced Vehicular Systems; **Kay Brocato**, Associate Professor of Leadership and Foundations, Studio School Ramp-up Cross-Disciplinary Facilitation Project; **Rebecca Goldberg**, Assistant Professor of Counseling and Educational Psychology, The Human-Animal Bond; and **April Heiselt**, Assistant Professor of Counseling and Educational Psychology, Researching the Impact of an Online Counseling Library.





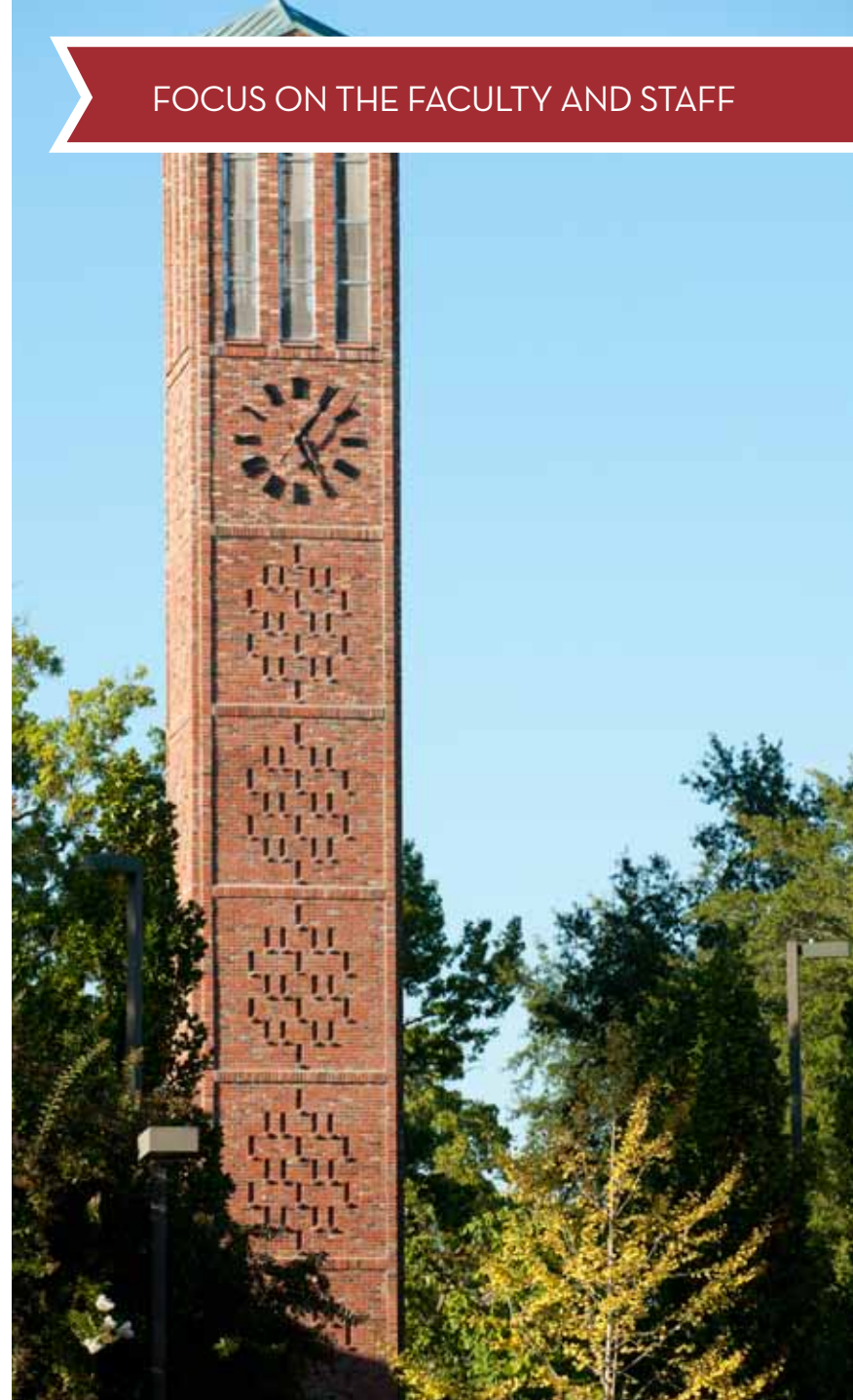
## FACULTY LEADERSHIP PROGRAM SELECTS FOUR

Four College of Education faculty members were among the 15 Mississippi State faculty members chosen for the prestigious 2010-11 William Hall Smith Faculty Leadership Program, which is sponsored by the Office of Research and Economic Development. Smith served as president of Mississippi State University from 1916-20.

During the 10-month program, participants meet for presentations and roundtable discussions with top administrators. The program's primary goal is to develop the next generation of academic leaders at Mississippi State. Session topics include leadership styles, organizational change, diversity, building winning research teams, and organizational evaluation and assessment.

"Mississippi State has a tradition of strong and effective leadership on our campus and in the communities we serve," said David Shaw, the university's vice president for research and economic development. "The Faculty Leadership Program builds on that foundation and helps outstanding faculty members further develop the skill sets needed to lead the university forward in its mission of teaching, research and service in the years to come."

The College of Education's participants are: **Dr. Devon Brenner**, Interim Department Head of Curriculum, Instruction, and Special Education; **Dr. Anastasia Elder**, Associate Professor of Counseling and Educational Psychology; **Dr. Julia Porter**, Associate Professor and Program Coordinator of Counselor Education, MSU-Meridian; and **Dr. Joshua Watson**, Associate Professor of Counselor Education, MSU-Meridian.



## SELECTED PUBLICATIONS

**Aarhus, C.** (2010). "Arrows of Lightning." Teaching music through performance in band, 8. Chicago: GIA Publications.

**Agiouvasitis, S.,** Motl, R.W., & Fernhall B. (2010). Prediction of oxygen uptake during level treadmill walking in individuals with multiple sclerosis. *Journal of Rehabilitation Medicine*, 42, 650-655.

**Baker, J. C.** (2010). *Magnolia (work for solo percussion)*. Portland, OR: TapSpace Publications.

**Blendinger, J. G.,** & Nicholson, J. (2010). *Walking the talk: Modeling literacy*. Dubuque, IA: Kendal/Hunt.

**Boggan, M.,** Bifuh-Ambe, E., **Harper, S.,** & Smith, I. (2010) Viva Saskatchewan! Improving school district teacher induction programs in the Katrina states by stealing ideas from our international neighbors. *Research in Higher Education Journal*, 7(1), 1-11.

**Coats, L. T.** (2010). The way we learned: African American students' memories of schooling in the segregated South. *Journal of Negro Education*, 79(1), 6-17.

**Crudden, A., & Sansing, W.** (2011). Unmet needs: Service issues for persons who are blind or visually impaired. *Journal of Visual Impairment & Blindness*, 105 (3), 170-180.

**Dill, A.,** Gilbert, J., Hill, J., **Minchew, S.,** & Sempier, T. (2010-2011). A successful retention program for suspended students. *Journal of College Student Retention: Research, Theory & Practice*, 12(3), 277-291.

**Doggett, R.A., Sheperis, C.J.,** & Krenzer, D. (2010). Development and implementation of behavioral interventions in the school setting: A function-based approach (pp 361-370). In *Professional School Counseling: A Handbook of Theories, Programs, & Practices (2nd Edition)*. Greensboro, NC: ERIC/CASS.

**Du, J., & Xu, J.** (2010). Quality of online discussion reported by graduate students. *Quarterly Review of Distance Education*, 11(1), 13-24.

Dufrene, B.A., **Reisener, C.D.,** Olmi, D.J., Zoder-Martell, K., McNutt, M.R., & Horn, D.R. (2010). Peer tutoring for reading fluency as a feasible and effective alternative for response to intervention systems. *Journal of Behavioral Education*, 19(3), 239-256.

**Franz, D., Thompson, N.,** Fuller, B., **Hare, D.,** Miller, N., & Walker, J. (2010). Evaluating mathematics achievement of middle school students in a looping environment. *School Science and Mathematics*, 110(6), 298-308.

**Henington, C.H., & Doggett, R.A.** (2010). Setting up and managing a classroom (pp. 233-250). In *Professional School Counseling: A Handbook of Theories, Programs, & Practices (2nd Edition)*. Greensboro, NC: ERIC/CASS.

Jacko, V. A., Cobo, H., Cobo, A., Fleming, R., & **Moore, J. E.** (2010). Mainstream employment in music production for individuals who are visually impaired. *Journal of Visual Impairment & Blindness*, 104(9), 519-522.

**Johnson-Gros, K. N.,** Kasse, K., Medley, M. B., Cates, G. L., & Doggett, R. A. (2011). The essential elements matrices: Is RtI a set of interrelated or independent components? Special edition in the *Journal of Evidence-based Practices in the Schools*, 12, 5-39.

**King, S. B., & Davis, J. E.** (2010). Changes in rural schools and communities through collaborative efforts among public schools, higher education institutions, and communities. *National Rural School Leadership Journal*, 1(1), Online.

**Knight, A.C.,** & Weimar, W.H. (2010). Effects of ankle taping on single and double leg balance. *Sport Science Review*, 19, 5-19.

**Leffler, J. L.,** & Eddowes, E. A. (2010). Books for early childhood educators [Review of the book - *Getting it right for young children of diverse backgrounds: Applying research to improve practice*]. *Dimensions of Early Childhood*, 38(3), 39.

**LeJeune, B. J.** (2010). Brain injury and personnel preparation at Mississippi State University. *Journal of Visual Impairment and Blindness*, 104(10), 658-660.

**Love, A.,** & Kelly, K. (2011). Equity or essentialism? U.S. courts and the legitimization of girls' teams in high school sport. *Gender & Society*, 25(2), 227-249.

**McDonnall, M. C.** (2010). The employment and postsecondary educational status of transition-age youths with visual impairments. *Journal of Visual Impairment & Blindness*, 104(5), 298-303.

Miller, S., & **Hopper, P. F.** (2010). Supporting reading goals through the visual arts. *Reading Improvement*, 47(1), 3-6.

**Mulkana, A. J., Hopper, P. F., & Jayroe, T.** (2010). School success for at-risk students. *Schooling*, 1(1). Available from <http://www.nationalforum.com/Journals/National%20Forum%20of%20Teacher%20Education%20Journal/National%20Forum%20of%20Teacher%20Education%20Journal/TOCte8e3.htm>

**Porter, J. Y.** (2010). Preparing to help clients cross the bridge to a brighter future. *Career Developments*, 26(2), 18-19, 24.

Shumack, K. A., & **Forde, C. M.** (2010). Professional development for business education teachers: Status, satisfaction, and level of decision-making. *NABTE Review in Business Education Forum*, 64(4), 26-33.

**Triplett, K.** (2011). Journeying from the past to the future. *Career Developments*, 27(2), 18-19.

**Vickers, B., & Hale, B.** (2010). Perceptions of self-development throughout the spectrum of coaching expertise. *Journal of Coaching Education*, 3(3), 117-141.

**Watson, J. C., Harper, S., Ratliff, L., & Singleton, S.** (2010). Holistic wellness and perceived stress: Predicting job satisfaction among beginning teachers. *Research in the Schools*, 17(1), 29-37.

West, J., **Hopper, P.F., & Hamil, B.** (2010). Science literacy: Is classroom instruction enough? *National Forum of Teacher Education Journal*, 20(3). Available from <http://www.nationalforum.com/Journals/National%20Forum%20of%20Teacher%20Education%20Journal/National%20Forum%20of%20Teacher%20Education%20Journal/TOCte8e3.htm>

**Williams, F. K.** (2010). Charter education. In T. C. Hunt., J. C. Carper, T. J. Lesley, II, & C. D. Ralsch (Eds.) *Encyclopedia of Educational Reform and Dissent*. Thousand Oaks, CA: Sage Publications, 148-151.

**Xu, J.** (2011). Homework emotion management at the secondary school level: Antecedents and homework completion. *Teachers College Record*, 113, 529-560.

## SELECTED PRESENTATIONS

**Allison, D.** (2010). *The Relationship Between Driver Rehabilitation, Vehicle Modifications, and the Seating and Mobility Assessment*. The Association for Driver Rehabilitation Specialists (ADED) Conference. Kansas City, MO.

**Baker, J. C.** (2010). Performance with the Bain Percussion Group at the Percussive Arts Society International Convention. Indianapolis, IN.

**Beriswill, J. E., Yu, C., & He, M.** (2010). *Using surveys to determine needs for curriculum re-design*. Association for Educational Communications and Technology, Anaheim, CA.

Bifuh-Ambe, E., **Triplett, K.**, Shirley, T., Tucker, C., Moore, K., & **Harper, S.** (2011). *Integrating geometry with children's literature and art*. National Council for Teachers of Mathematics. Indianapolis, IN.

**Boggan, M.** (2011). *Cyborgs: New Learning Systems for a Cybernetic Culture*. Society for Informational Technology & Teacher Education (SITE) International Conference. Nashville, TN.

**Cirlot-New, J. & McConnell, L.** (2011). *AAC Intervention for Children with Autism Spectrum Disorders*. Assistive Technology Industry Association Conference. Orlando, FL.

Collins, C., **Aarhus, C.**, Belongia, D., & Rogers, B. (2010). *Bridging the Gap: Working Effectively with our High School Colleagues*. College Band Directors National Association Athletic Band Symposium. Louisville, KY.

**Craig, L., Duncan, J., & Jones, M.** (2010). *Project EXPRESS Yourself*. Alabama Recreation & Parks Association Conference. Orange Beach, AL.

**Crudden, A. & Sansing, W.** (2010). *Successful transition to work strategies: Recommendations from professionals*. International Conference of the Association for Education and Rehabilitation of the Blind and Visually Impaired. Little Rock, AR.

**Harper, S.L.** (2010). *Bridging mathematics and literacy with children's books and manipulatives*. National Council of Teachers of Mathematics Regional Conference. Denver, CO.

**Henington, C., Beveridge, S.M., & Doggett, R.A.** (2010). *Applied professional development in academic and behavioral interventions: Lessons learned*. American Psychological Association Annual Conference. San Diego, CA.

**Jayroe, T., Hailey, L.A., & Mulkana, A.** (2011). *Changing academic performance and promoting success (CAPPS): Middle and high school PDSs*. Professional Development Schools National Conference. New Orleans, LA.

**Lance, E. K., Taylor, C., & Aarhus, C.** (2011). *Leading the Band: Moving from Good to Great*. West Tennessee Band and Orchestra Association Convention. Memphis, TN.

**LeJeune, B. J.** (2010). *Severe brain injury and vision loss: Things we continue to learn to maximize quality of life*. International Conference of the Association for Education and Rehabilitation of the Blind and Visually Impaired. Little Rock, AR.



## FOCUS ON THE FACULTY AND STAFF

**Love, A., & Kelly, K.** (2010). *U.S. courts and female-only teams in high school sport*. North American Society for Sociology of Sport (NASSS) Conference. San Diego, CA.

**McDonnall, M. C.** (2010). *Factors that predict employment for transition-age youth with visual impairments*. International Conference of the Association for Education and Rehabilitation of the Blind and Visually Impaired. Little Rock, AR.

**Porter, J. Y.** (2011). *Coping with the Rollercoaster: Effectively Handling Emotions Triggered by Disasters*. American Counseling Association Conference. New Orleans, LA.

**Sebba, Rosângela Y.** (2010). *Eight Sonatinas and Sonata by M. Camargo Guarnieri*. Fundacao Casa Brasil de Cultura and MSU. Brazil.

**Sobaskie, J. W.** (2010). *Œuvres Complètes de Gabriel Fauré, Musique du Chambre, Vol 3: Trio pour piano, violon et violoncelle, Quatuor à cordes, BA 9464*. Kassel: Bärenreiter-Verlag.

**Vickers, B., & Wax, B.** (2011). *Physical Education Teacher Candidates' Perceptions of Coaching Preparedness*. AIESEP World Congress. Limerick, Ireland.

Warren, S.T. & **Elder, A.D.** (2011). *Inflated expectations: An empirical study on college students' academic entitlement beliefs*. Annual Meeting of the American Educational Research Association, New Orleans, LA.

**Xu, J., & Yuan, R.** (2011). *Secondary School Students' Interest in Homework: Do Ethnicity and School Location Matter?* Annual Meeting of the American Educational Research Association. New Orleans, LA.

Yu, C., **Beriswill, J. E., Okojie, M., & He, M.** (2010). *Clarifying learning expectation: Development of standards-based curriculum*. Annual Meeting of the Association for Educational Communications and Technology. Anaheim, CA.

**Yuan, R., Xu, J., Du, J., & Coats, L. T.** (2011). *Gender and Homework Management Reported by African American Students*. Annual Meeting of the American Educational Research Association, New Orleans, LA.



# FACULTY AND STAFF KUDOS

**Dr. Craig Aarhus**, Assistant Professor and Assistant Director of Bands in the Department of Music, was invited to serve as Guest Conductor and Instructor at the Rocky Mountain Summer Music Camp held at Colorado State University, Ft. Collins, CO, where he conducted the concert band and taught drum major/leadership classes to over 300 students. Aarhus was also invited to serve as the Clinician/Director at the Smith Walbridge Clinics held at Eastern Illinois University, Charleston, IL, where he worked with over 250 high school and college drum majors from throughout the country. He also served as an adjudicator at UNIFEST, University of Saskatchewan, Saskatoon, SK (Canada), and at the Heart of Dixie Marching Band Festival, Prattville, AL. Dr. Aarhus also serves as the Mississippi State Chair for the National Band Association, the largest band organization in the world.

**Dan Allison**, Research Associate for the T.K. Martin Center for Technology and Disability, was elected to serve as President of the Mississippi Occupational Therapy Association.

**Dr. Joanne Beriswill**, Assistant Professor in the Department of Instructional Systems & Workforce Development, was awarded the 2010 Educator of the Year award by the Mississippi Educational Computing Association, which is awarded for a teaching career marked by advancing technology in education, demonstrating cutting-edge vision and management of technology in instruction, providing a technology-rich environment for all students, and actively promoting technology integration within educational institutions. Beriswill also earned the Early Career Symposium Award from the National

Science Foundation at the annual conference of the Association of Educational Communications and Technology.

**Dr. Tony Doggett**, Associate Professor in the Department of Counseling & Educational Psychology received the Editor's Appreciation Award for 2011 from the Journal of School Psychology.

**Drs. Anastasia Elder**, Associate Professor of Counseling and Educational Psychology; **Devon Brenner**, Interim Department Head of Curriculum, Instruction, and Special Education; **Julia Porter**, Associate Professor of Counseling and Educational Psychology at MSU-Meridian; and **Joshua Watson**, Associate Professor of Counseling and Educational Psychology at MSU-Meridian, were selected to participate in the 2010-2011 MSU Faculty Leadership Program.

**Dr. Sallie Harper**, Associate Professor and Interim Associate Dean in the MSU-Meridian Division of Education, was awarded the 2010-2011 Excellence in Higher Education Award from the Mississippi Alliance for Arts Education. The award is given to honor individuals, departments, and/or institutions in higher education for superior teaching, including evidence of arts education leadership or research; professional activity and leadership beyond the local campus; and evidence of modeling best practices of arts education through teacher education courses and programs.

**Dr. April Heiselt**, Assistant Professor in the Department of Counseling & Educational Psychology,

was chosen as the first interviewee in a series of interviews about the roles individuals assume that make a difference in the lives of young people, their college campuses, and the extended communities in which they work at The Florida State University. The interview can be seen in Character Clearinghouse, at [characterclearinghouse.fsu.edu](http://characterclearinghouse.fsu.edu).

**Dr. Mike Huff**, Assistant Professor in the Department of Music, performed as featured guest soloist with the Metropolitan Chamber Orchestra in Jackson in November 2010, performing Richard Peaslee's work "Nightsongs" and continues to perform with Meridian, Mobile, and Starkville Symphonies.

**Dr. Teresa Jayroe**, Associate Dean and Professor in the College of Education, won the 2010 College of Education Faculty Research Award.

**Jeffrey Leffler**, a Project Coordinator at the Early Childhood Institute, was recently elected as president-elect of the Mississippi Early Childhood Association. He will take office in October and serve a three-year term as president-elect, president, and past president. The association is a crucial professional resource for the early childhood field in Mississippi and the South. Leffler was also selected to serve on the Editorial Committee for Southern Early Childhood Association. This appointment, which began in January 2011, is for three years. The Editorial Committee oversees all of the publications for this regional early childhood professional organization including the peer-reviewed journal, *Dimensions of Early Childhood*.

**B.J. LeJeune**, Senior Research Associate at the Rehabilitation Research & Training Center on Blindness & Low Vision (AERBVI), was awarded the Bruce McKenzie Award for Lifetime Achievement and Outstanding Service to the field of Vision Rehabilitation Therapy in July at AERBVI in Little Rock, AR.

**Dr. Michele Capella McDonnell**, Interim Director and Research Professor for the Research, Rehabilitation, and Training Center on Blindness and Low Vision, was awarded the 2011 Faculty Research Award for the College of Education, from the Mississippi State University Office of Research and Economic Development.

**Dr. Charles Palmer**, Associate Professor in the Department of Counseling & Psychology, wrote and was awarded a \$700,000 Department of Education grant for training graduate rehabilitation counselors (RC). Dr. Palmer was also elected as the Southeast Regional Representative to the National Rehabilitation Counseling Association's Board of Directors and was elected to the Board of Directors of the Council on Rehabilitation Education.

**Dr. Michael Patilla**, Associate Professor in the Department of Music, has been appointed to the Fulbright Senior Specialist Roster. The Fulbright Specialist Program promotes linkages between U.S. academics and professionals and their counterparts at overseas universities or institutions with education focused programming. The program is designed to award grants to qualified U.S. faculty and professionals, in select disciplines, to engage in short-term collaborative two to six week projects at higher education institutions in over 100 countries worldwide. International travel costs and an honorarium are funded by the U.S. Department of

State Bureau of Educational and Cultural Affairs. Patilla was awarded a Fulbright Lecture/Research award to Honduras in 2007.

**Dr. Debra Prince**, Associate Professor in the Department of Leadership and Foundations, was selected as one of 24 scholars across the nation as a 2010 Fellow of the United States Department of Education's National Center for Education Statistics program.

**Dr. Julia Porter**, Associate Professor in the MSU-Meridian Division of Education, was elected to a three-year term as Trustee in the Association for Creativity in Counseling and was invited to serve a two-year term as Chair of the Research Committee at the National Career Development Association. Dr. Porter was also awarded the 2011 VISTAS Award of Excellence for work published in VISTAS by the American Counseling Association and the 2010 Meritorious Service Award by the American College Counseling Association. In addition to being awarded the College of Education's 2011 Clyde Muse Service Award. Porter also earned the 2010 Richard C. Adkerson Faculty Award.

**Dr. Rosângela Sebba**, Associate Professor in the Department of Music, traveled to Lisbon-Portugal to give a recital and a lecture about Brazilian music in the spring of 2011. The solo recital at Palácio Foz - Sala dos Espelhos was on March 14th and emphasized Sonatas and Sonatinas by different composers from different periods such as Scarlatti, Haydn, Ravel, and Camargo Guarnieri, showing the development of the sonata-form. The lecture, "Sonata and Sonatinas," was given at the Universidade Nova de Lisboa, CESEM (Centro de Estudos de Sociologia e Estética Musical) and featured only the works of M. Camargo Guarnieri, a twentieth-century Brazilian composer.

Examples used in the lecture were taken from her CD recently released in the summer of 2010, entitled "Sonata and Sonatinas."

**Kelly Shumack** and **Connie M. Forde**, Professor and Department Head of Instructional Systems & Workforce Development, were awarded a certificate of recognition for the 2010 Outstanding NABTE Review Article by the National Association for Business Teacher Education on April 21, 2011, at the NABTE meeting held at the 2011 National Business Education Association Convention.

**Dolly Tompkins**, Business Coordinator for the Department of Curriculum, Instruction, and Special Education, was awarded the 2011 Research Support Staff Award for the College of Education, from the Mississippi State University Office of Research and Economic Development.

**Dr. Joshua Watson**, Associate Professor in the MSU-Meridian Division of Education, won the 2011 Faculty Research Award for the Meridian Campus Division of Education, from the Mississippi State University Office of Research and Economic Development.

**Dr. Jianzhong Xu**, Professor in the Department of Leadership and Foundations, published six articles in refereed journals, along with one book chapter in 2010. Five of these articles were published in journals that are included in the Social Sciences Citation Index (SSCI), including Journal of Educational Research, Teachers College Record, Educational and Psychological Measurement, Learning and Individual Differences, and Educational Psychology. This ranked Xu first among MSU faculty members or researchers with respect to the number of articles published in SSCI journals last year. Meanwhile, his work was also cited 54 times in SSCI in 2010.



# NEW FACULTY

## KINESIOLOGY

**Dr. Andreas Kavazis**, Assistant Professor of Kinesiology, graduated from the University of Florida in 2003 with a Ph.D. He is also a 2001 graduate of the University of Florida with a Master of Science degree and a 1999 graduate of Louisiana State University with a Bachelor of Science degree. He did a post-doctoral training at the University of Florida working under the mentorship of Dr. Scott K. Powers. His current areas of research include mitochondrial adaptations in skeletal and cardiac muscle during periods of both increased activity (e.g. exercise) or inactivity (e.g. immobilization), oxidant production and antioxidant defense mechanisms in both skeletal and cardiac muscle, and exercise induced cardioprotection. Kavazis' professional memberships include the American Physiological Society and the American College of Sports Medicine Society.

## LEADERSHIP & FOUNDATIONS

(MERIDIAN)



**Penny Wallin**

**Dr. Penny Wallin**, Assistant Professor of Educational Leadership at MSU Meridian, assists schools throughout the state as an independent educational consultant. She has served as Trainer of Teachers for the MS Assessment System, Thinking Maps, and Multiple Intelligences;

worked on the State Task Force for Professional Development; and presented for ASCD, NEA, PDK, National Board for Professional Teaching Standards,

and the US Arts Commission and Endowment for the Arts. Wallin is an elected member of the Kennedy Center Alliance for Arts Education Network Leadership Committee, representing Alliances across the southeastern United States. During her more than 30 years in education, she has served as a teacher, principal, professor, NCATE examiner, curriculum director, assistant superintendent, and superintendent. She holds degrees from Rider University, University of Southern Mississippi, and Harvard University. She was among the first 81 national pioneer teachers and one of the first two in the state of Mississippi to receive National Board Certification. She has taught pre-school through grade 12 and has held administrative and leadership roles in New Jersey, Florida, and Mississippi. She has been honored as Outstanding Superintendent of the Year for her contribution to arts in education, named Global Teacher of the Year, and was a contributing writer for the President's Committee on the Arts and Humanities and the Arts Education Partnership Report, Gaining the Arts Advantage: Lessons from School Districts That Value Arts Education. Wallin is listed among Who's Who Among America's Teachers and The Heritage Registry of Who's Who.

## CURRICULUM, INSTRUCTION, AND SPECIAL EDUCATION

(MERIDIAN)

**Dr. Kimberly Triplett**, Assistant Professor of Curriculum and Instruction at MSU Meridian. Triplett, a native of Louisville, Mississippi, earned a Bachelor of Science degree in Elementary Education from Mississippi University for Women, Master and Specialist degrees in Curriculum and Instruction from the University of Mississippi, and a Doctorate degree in Curriculum and Instruction with a minor



**Kimberly Triplett**

in Community College Leadership from Mississippi State University. Triplett is a former elementary school teacher, teaching with Oxford Public School District for five years before joining the staff at the Early Childhood Institute at Mississippi State

University. Kimberly served as field supervisor/training coordinator of several professional and quality improvement projects for young children and their families in the Mississippi Delta. In addition, Kimberly conducts workshops and seminars throughout Mississippi, stressing the need and importance of empowering child care providers and teen mothers to provide rich educational experiences for young children.

## MISSISSIPPI STATE THERAPEUTIC HORSEBACK RIDING



Business students present a check to the Therapeutic Horseback Riding Program.

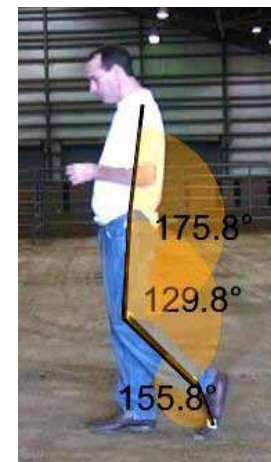
The MSU Extension Service's 4-H Therapeutic Riding and Activity Center (TRAC) provides therapeutic riding through educational and research-based activities. Under the leadership and direction of Mary Riley, Program Coordinator and North American Riding for the Handicapped Association (NARHA) certified instructor, the program has received premier accreditation through NARHA and indicates high safety and professional standards. Several faculty members in the College of Education have found therapeutic horseback riding to be an extremely beneficial program, with benefits related to research, service, and education. Therapeutic horseback riding has been defined by NARHA as the use of equine activities to achieve therapeutic goals in the cognitive, psychomotor, and affective domains. There are different approaches for using therapeutic horseback riding that are based on the goals and type of disability of the participant.

Although many therapeutic horseback riding programs claim tremendous benefits for the riders, there is little empirical evidence to substantiate those claims.

**Dr. Katherine Gilliland**, Associate Professor in the Department of Kinesiology and NARHA certified instructor, is conducting gait analysis research along with colleague **Dr. Adam Knight**. The horse's gait simulates the movement of a human's pelvis, trunk, and shoulder girdle when walking. Theoretically, the movement of the

horse at a walk provides sensory input that stimulates normal muscle responses in the rider. Together, Gilliland and Knight are reviewing acute and chronic changes in the locomotor skills of the rider derived from participation in horseback riding. Students from the Department of Kinesiology have gained valuable experience participating as volunteers for TRAC and assisting with research. During the fall semester of 2010, Dr. Gilliland gave a presentation on Various Benefits of Therapeutic Horseback Riding during the Mississippi Alliance of Health, Physical Education, Recreation and Dance Conference. Additionally, Laura Beth Roby, Jennifer Morton, and Lindsey Triplett, all majors in the Department of Kinesiology, presented research, under the direction of Knight and Gilliland, at the Southeast Conference for the American College of Sport Medicine entitled Effect of Therapeutic Horseback Riding on Gait in a Participant with Down Syndrome. Not only are there physical benefits associated with therapeutic horseback riding, there are also psychological benefits provided through the development of a human-animal bond.

**Dr. Rebecca Goldberg**, Assistant Professor of Counseling in Counseling and Educational Psychology, has been meeting to initiate research on the mental health aspects of therapeutic horseback riding. The opportunities for research, service, and education are great but do not compare to the benefits gained from the riders. "You simply cannot put a value on watching a person walk when he was told he would never be able to or a child laugh when working on motor skills when all they would do before was cry because it hurt too much to move or a person with autism making social connections when they were unable to in the past or a mother hearing her child talk for the first time and in a complete sentence saying, 'today I rode a horse,'" said Gilliland. If you would like to sign up as a volunteer or a rider, contact Mary Riley, 4-H TRAC Coordinator at 662-325-3350, e-mail (mriley@ext.msstate.edu), or by mail (4-H TRAC, Box 9641, Mississippi State, MS 39762).



A digital projection of joint angles used in research by the Therapeutic Horseback Riding Program.

# INTERDISCIPLINARY COLLABORATIVE PROJECT PROMOTES WELLNESS

In the fall of 2010, Dr. Carl Young, Assistant Professor of Health Care Administration in the Meridian Campus Division of Business; Dr. Vicki Gier, Assistant Professor of Psychology in the Meridian Campus Division of Arts and Sciences; and **Dr. Julia Porter**, Associate Professor of Counselor Education in the Meridian Campus Division of Education, began collaborating on a project entitled Interdisciplinary Collaboration to Promote Wellness through the Health Sciences: Health Care Administration, Psychology, and Counselor Education, a project funded through a collaborative research facilitation grant from the MSU Office of Research and Economic Development.

This project created an inter-college multidisciplinary student health professions' association that includes graduate and undergraduate students. Students selected the name "Student Allied Health Professionals" for the organization. Approximately 40 students from the Divisions of Business, Education, and Arts & Sciences have joined the association, and student leaders from each of the three disciplines have been elected. **Jennifer Knox**, a graduate student majoring in School Counseling, is the Division of Education representative.

Each student division representative has been responsible for planning and conducting a monthly meeting for the student organization. They had three guest speakers during the 2011 spring semester: Dr. Treasure Tyson, Chief of the Medicaid Fraud Investigation Unit of the Mississippi Attorney

General's Office, along with her chief investigator, who addressed Medicaid fraud detection and protection of vulnerable populations; Dr. Jimmy Hollingsworth, a practicing general dentist and the 2010 Alumni Fellow for the Meridian Campus, who addressed how his undergraduate education at MSU Meridian prepared him for graduate school and owning/operating his professional practice; and Dr. Jan Lemon, a school counselor in the Rankin Public School District, who discussed lessons learned from graduate school and developing a professional identity.

The project also sponsored a blood donation drive on the Meridian campus in conjunction with local hospitals and blood banks during April of 2011 as the Student Allied Health Professionals association's community service project for the semester. Forty-eight students, faculty, and staff participated in the blood drive. The project is developing a detailed community service plan for student organization members to give back to the community and be recognized for their community service.



Volunteers donate blood during the blood drive.

Drs. Porter, Gier, and Young, the faculty advisors for the association and co-principal investigators for the grant, have begun to explore further relevant research opportunities that will benefit students in learning to plan, implement, and evaluate research activities and concurrently provide grant support and benefit to the University and greater Meridian communities. The faculty advisors are also working on a collaborative grant that would fund an interdisciplinary health conference at the MSU-Meridian Campus.



# ALUMNI DELEGATES CELEBRATE 30 YEARS, NAME OFFICERS

The Mississippi State University Alumni Delegates are celebrating their 30th anniversary this month. Founded in 1980, Alumni Delegates serve as student liaisons between the university and its alumni. Their purpose is to improve the understanding of the role of the Alumni Association by educating and involving students in activities and events of the association.

The student branch of the Alumni Association has more than 40 members, and serves the campus and community by participating in a number of events. This year they worked on projects benefiting the Lamia Afghan Foundation, Habitat for Humanity, Montgomery Gardens, and Rolling Hills, among others. They also serve as the first point of contact for events such as the Alumni Association's football tailgate at home games, the annual awards banquet and leadership conference, class reunions, and events for national and chapter alumni leaders.

The Delegate organization is led by a new group of students. Officers include:

- Nnedi Ezeala-Harrison, secretary, a junior Biological Sciences major. A native of Ridgeland, she is the daughter of Fidel and Agnes Ezeala.
- Matt Stratton, vice president, education, a senior Industrial Engineering major. A Tupelo native, he is the son of Janet and Lee Stratton

MSU Alumni Delegate officers include, from left, Nnedi Ezeala-Harrison, Secretary; Matt Stratton, Vice President, Education; Meg Swindoll, President; and Katie Landry, Vice President, Public Relations.



- **Meg Swindoll**, president, a junior Kinesiology major. She is the daughter of Arliss and Debbie Swindoll of Oxford.
- **Katie Landry**, vice president, public relations, a junior Geosciences major. She is the daughter of Dianna and Steven Landry of Mandeville, La.

"For 30 years, the Alumni Delegates have done so much to assist our association and our university," said Jimmy Abraham, Associate Vice President for Development and Alumni and Executive Director of the MSU Alumni Association. "We are very proud of these students and know our newly elected officers will do an excellent job leading this outstanding group in 2011."

# FIVE STUDENTS BENEFIT FROM 2010 LEAP SCHOLARSHIPS

Five Mississippi State University students are benefiting from the Learning and Educating through Alternative Programs (LEAP) Scholarships for the College of Education's Master of Arts in Teaching - Secondary (MAT-S) program. MAT-S is a post-baccalaureate degree for individuals preparing for careers as professional educators. After graduating from the 14-month program, participants are eligible to apply for an alternate-route Class AA Mississippi teaching license.

Each LEAP participant receives a \$5,000 scholarship to help defray costs of the program and is loaned a laptop computer to use while completing degree requirements. Funded by the U.S. Department of Education, the scholarship program is a collaborative effort between faculty at MSU's Starkville and

Meridian campuses. Partners include the MSU's College of Education, Mississippi Department of Education's Mississippi Teacher Center, and approximately 40 state school districts. The principal investigators for the LEAP grant are Dr. Matt Boggan, Dr. Terry Jayroe, Dr. Susie Burroughs, Dr. Connie Forde, Dr. Linda Cornelious, Dr. Margaret Pope, and Dr. Dinetta Karriem. Mrs. Susan Steward is the project coordinator.

LEAP Scholars include (by hometown): Ackerman - Math major **Crystal Thomas**, Carthage - Art major **Shelly Bonney**, Corinth - Biology major **Misti Tucker**, Enterprise - Biology major **Jennifer Davis**, and Starkville - Art Major **Sabrina Campbell**.

# MSU AGAIN SELECTED TO AWARD TILLMAN MILITARY SCHOLARSHIPS

Mississippi State University has been selected to award national Tillman Military Scholarships for a second consecutive year.

Four incoming MSU students have joined five previously enrolled students as recipients of the 2010-11 scholarships named in memory of Pat Tillman, the late U.S. Army Ranger and former NFL football player.

"Mississippi State has been recognized among the top 20 best colleges and universities nationally for military personnel and veterans to pursue their educational goals," said MSU President Mark E. Keenum. "We are exceptionally pleased the Pat Tillman Foundation continues to honor his memory by awarding generous scholarships for students enrolled on our veteran-friendly campus," he added.

In 2009, Mississippi State was among the inaugural group of institutions with scholars selected to receive Tillman Military Scholarships, which support the education of both veterans and their families at selected college campuses around the nation. Scholarship amounts for the MSU group vary between \$1,500 and \$10,000.

Tillman was a starting safety with the Arizona Cardinals 1998-2001. In mid-2002, he placed his professional football career on hold to become an Army Ranger. Two years later, the San Jose, Calif., native was killed on active duty in Eastern Afghanistan. Following his death in 2004, the Arizona-based Pat Tillman Foundation was created by family and friends.

New students selected as 2010 Tillman Military Scholars include (by hometown):

**MANTEE** - Brandon Allen Stuckey is a freshman Wildlife and Fisheries major. Before entering MSU, he served as a page for the Mississippi State Senate, graduated high school with honors and was a volunteer fireman and first responder. Brandon is the son of Peggy and Richard Stuckey.

**JACKSON, Tenn.** - James Michael Bryant is a first-year graduate student pursuing an MBA. He served six years in the U.S. Marine Corps and previously earned a bachelor of business administration from MSU. He is vice president of the Student Veterans Association and vice president of Gamma Iota Sigma. He is the son of Jim and Tammy Bryant.

MSU Tillman Scholars for 2010 include (first row, l-r) Janice Cunningham, Samantha Hill, and Keeley Tatum. Second row (l-r) are Markus Edwards, Brandon Stuckey, Catherine Turner, James Michael Bryant, and Charles Pease. Not pictured is Jordan Lohman.



**STARKVILLE** - **Charles Edward Pease** is a senior slated for a December graduation with a degree in Physical Education with a teaching/coaching concentration. He served one year in Iraq. He is a member of the Dean's List, President's List, and a member of the Kappa Delta Pi educational honor society. Charles is the son of Shirley Pease and Charles Marshall of Rock Island, Ill.

**ZWIBRUECKEN, GERMANY** - Janice L. Cunningham is a freshman Biological engineering major with a concentration in biomedical engineering. She is a member of the National Honor Society and the German National Honor Society. She was valedictorian of her 2010 high school graduating class and is the daughter of Alexander and Monika Cunningham.

Second-year recipients include:

**BRANDON** - **Markus L. Edwards**, a junior Music Education major, is the son of Melvin and Vicki Edwards.

**FLOWOOD** - Samantha B. Hill, a sophomore communication major, is the daughter of Terry and Geraldine Hill.

**RIDGELAND** - Jordan M. Lohman, a sophomore Landscape Architecture major, is the son of Jeffrey and Melodye Lohman, and **Keeley E. Tatum**, a senior Secondary Education major, is the daughter of Nancy Tatum and the late James Tatum.

*(Continued on page 24)*

**TUPELO - Catherine Turner**, a sophomore Elementary Education major, is the daughter of James and Cathy Turner.

The recipients are among nearly 1,800 student veterans, service members, dependents, and survivors currently enrolled at Mississippi State.

Tillman Military Scholar candidates may be affiliated with any branch of the U.S. Armed Forces. Recipients must be fulltime students who maintain a 3.0 grade-point average and demonstrate financial need, among other criteria. Scholars are required to perform service of their choice during their program tenure and report that service to the Tillman community.

## STEM STUDENTS RECEIVE ROBERT NOYCE SCHOLARSHIPS

Five undergraduates and one master's student are recipients of the Robert Noyce Teacher Scholarships in the College of Education at Mississippi State University.

The scholarship program encourages talented science, technology, engineering, and mathematics (STEM) majors to become K-12 teachers in the math and science disciplines. Program completion includes a two-year teaching commitment in a high-need Mississippi school district for each year of support received, according to Linda Coats, associate professor in MSU's Department of Leadership and Foundations and scholarship administrator.

"Service must be completed within eight years after graduation from the degree program in which the scholarship was awarded," Coats said. She explained that availability is to undergraduate juniors and seniors pursuing double majors, with one in chemistry, biology, physics, mathematics, or engineering and the other in mathematics education or science education in a STEM field. Those who already hold a bachelor's degree in a STEM field are eligible for a professional stipend.

Qualifying undergraduates receive up to \$10,000 each year for a maximum of three years, while qualifying STEM professionals with a degree receive \$15,000 for one year toward an advanced degree.

This year's recipients include: **Tishana Smith**, a junior majoring in Secondary Education/Mathematics from Cedar Bluff; **Jennie Mason**, a junior majoring in Secondary Education/Mathematics from Macon; **Michael Newsome**, a STEM

"The Tillman Military Scholars program invests in veterans and their families through education, community, and advocacy," said Hunter I. Riley, Tillman Foundation program director. "The scholarships are a ready source of assistance for schools like Mississippi State which have strong veterans' programs for our returning service men and women and their dependents who wish to start, finish, or further their education."

The G.V. "Sonny" Montgomery Center for America's Veterans administers the campus scholarship program. The center has gained a national reputation for work with military and veteran personnel and organizations.



**Kayla Allen**



**Jennie Mason**



**Jennifer McCoy**



**Michael Newsome**



**Tishana Smith**



**Simeon Weathersby**

professional pursuing a master of teaching arts degree from McAdams; **Jennifer McCoy**, a junior majoring in Secondary Education/Mathematics from Pelham, AL; **Simeon Weathersby**, a senior majoring in Mathematics with teaching certification from Starkville; and **Kayla Allen**, a junior majoring in Secondary Education/Mathematics from West Point.

For undergraduates to be considered, they must have a 3.0 grade-point average or higher, be a U.S. citizen interested in pursuing a double major, provide documentation of at least 40 hours working with children, and complete the application process.

To be considered for stipends, professionals must hold at least a bachelor's degree in a STEM field from a regionally/nationally accredited institution, be a U.S. citizen, have a minimum 2.75 grade point average on a 4.0 scale, provide current GRE scores, meet minimum Praxis I and Praxis II examination requirements, provide documentation of at least 40 hours working with children, and complete the application process.



# MISSISSIPPI STATE STUDENTS WIN AT STATE LEADERSHIP CONFERENCE

The Mississippi State University chapter (Nu Chi) of Phi Beta Lambda attended the annual State Leadership Conference, held January 26-28, in Natchez, MS. The students who participated were: Trent Nichols, President; Kanisha Patterson, Vice President; Jenneshia Parks, Treasurer; Crystal Price, Secretary; Leslie Mangrum; Rhonda Johnson; Jacobly Clay; Corey Wheeler; and Ashley Tate. Each student participated in up to two events ranging from Future Business Teacher to Management Concepts or Public Speaking.

The following students won awards at the competition: 1st Place, Financial Analysis & Decision Making, Trent Nichols a senior Banking and Finance major; 2nd Place, Management Concepts, Trent Nichols; 1st Place, sales presentation, **Crystal Price** a junior Information Technology Services major; 1st Place, Future Business Teacher, **Kanisha Patterson** a senior Teacher Technology major; 1st Place, Public Speaking, **Leslie Mangrum** a junior Teacher Technology major; 1st Place, Retail Management, **Rhonda Johnson** a senior Information Technology Services major; and 4th Place, Hospitality Management, Rhonda Johnson

These students will automatically be eligible to compete in the Phi Beta Lambda's national awards program June 23-26, 2011 which will be held in Orlando, FL. These MSU students will represent the State of Mississippi as they compete at the National Leadership Conference.

This conference provides students and advisers



(Left-Right) Crystal Price, Trent Nichols, Leslie Mangrum, and Rhonda Johnson. (not pictured, Kanisha Patterson)

the opportunity to share ideas and common goals with their peers from across the country. The competition is part of a competitive events program sponsored annually by FBLA-PBL, an association for students pursuing business and business-related careers. Individuals, local chapters, and state teams compete in over 40 events representing a range of leading edge business, career, and leadership development activities. The winners of these challenging and prestigious awards are selected from over 250,000 members of FBLA-PBL and have won state and regional competitions to qualify for the national awards program. More than 6,000 delegates to the 58th annual conference elect national student officers and attend business and leadership workshops in addition to competing in business and career skill events. Future Business Leaders of America-Phi Beta Lambda, Inc. (FBLA-PBL) is a nonprofit organization that prepares students for careers in business and business education. To learn more, see FBLA-PBL's web site at [www.fbla-pbl.org](http://www.fbla-pbl.org) or (800) FBLA-WIN.

## PREPS PODCASTING PROJECT

In the 2010 fall semester, students in Dr. Missy Hopper's Methods of Teaching Language Arts course were invited to work with the Program of Research and Evaluation for Public Schools (PREPS), Inc. to create podcasts for the Corinth, Mississippi city schools. Corinth Schools Online provides instructional and informational podcasts to students, parents, and the community. These visual podcasts can be watched directly from the school website through video streaming. Podcasts can also be downloaded to any student's computer by subscribing to the school site free of charge.

Under the supervision of Dr. Cindy Ward, Executive Director for PREPS, and Marion Jones, Associate Director, students were assigned a grammar standard from the MS Curriculum Frameworks on the secondary level. Students were then required to create an instructional podcast for use in the project. Ms. Jones attended the class to provide guidance and support to the students. After becoming an "expert" in their assigned standard, students wrote a script for teaching, explaining, and demonstrating the standard. As part of the script, students wrote all grammar examples used in the lesson. For further remediation, students also created a supplemental activity and assessment for use with each podcast. Students in the class reviewed and critiqued each other's lessons, making constructive suggestions for improvement. All podcasts were recorded at a local professional recording studio and are now online at the Corinth Schools Online website, at [http://www.corinthsschool.net/~federalprograms/corinthonline/Corinth\\_Schools\\_OnLine.html](http://www.corinthsschool.net/~federalprograms/corinthonline/Corinth_Schools_OnLine.html)

# NIKOLE ROBERTS CONDUCTS RESEARCH AT KENNEDY KRIEGER INSTITUTE

Educational Psychology doctoral student Nikole Roberts' daughter, Clara Kate, and her late son, Kaiser, were both born with Albright's Hereditary Osteodystrophy (AHO), a complex and under-researched hormonal resistance disorder. Albright's is a rare genetic syndrome that, because of its hormone resistance, causes those who have it to typically be short in stature, lethargic, and obese.

Since Clara Kate's diagnosis in 2009, Nikole's doctoral research has focused on the cognitive development of AHO children, since little research about this uncommon condition exists. Studying prognosis, treatment options, and more, Nikole discovered Dr. Emily Germain-Lee, an associate professor of pediatrics in the Division of Pediatric Endocrinology at Johns Hopkins University in Baltimore, Md, and also founder of the Albright Clinic at the Kennedy Krieger Institute in Baltimore. Having studied the cognitive development of children while working on her master's degree in MSU's psychology department, this immediately piqued her interest. She wanted to know if Clara Kate's lack of growth hormone was not only the reason for her slow physical development, but also if it was associated with her child's failure to thrive in a learning environment. Nikole will survey families at the Kennedy Krieger Institute to gather the data needed for her dissertation and, ultimately, for continued discovery into AHO.



The Roberts family also appeared with Dr. Germain-Lee on ABC News' Nightline to discuss the disorder and Clara Kate's amazing progress toward a better quality of life. Clara Kate, born in 2004, has today gone from a child with non-detectable growth hormone to one with normal levels of 10 or greater. A kindergartener at Starkville Academy, the six-year-old is taking ballet, doing gymnastics, and even climbing rock walls.

## STUDENT KUDOS

**Joshua Trent Smith**, a sophomore Music major from Noxapater, received second place in the Freshman/Sophomore piano solo division of the Mississippi Music Teachers Association's annual collegiate competition held on March 5, 2011, at Delta State University. In the competition, he performed Frederic Chopin's Nocturne in D-flat Major, Op.27 No.2. Mr. Smith studies piano with Dr. Rosângela Sebba.

**Anna Danielle Morgan**, a first year Music Education student at MSU, won first prize in the annual Concerto Competition, sponsored by the Department of Music and Starkville/MSU Symphony

Orchestra. Ms. Morgan competed with over 25 students from different studios and levels and will perform in the fall of 2011 the first movement of Kabalevsky's Concerto No. 3 for piano and orchestra. Ms. Morgan is a student of Dr. Rosângela Sebba.

**Jeri Lynn Rushing**, a master's level graduate student in the School Counseling program, was recently nominated as the 2011 Mississippi Counseling Association (MCA) Emerging Leader. She is the first master's level student to receive this prestigious award. She will be recognized at the American Counseling Association (ACA) conference in New Orleans.

**Jen Kazmerski** was awarded the Ron Edwards Dissertation Award from the Behavioral School Psychology Interest Group. Her dissertation was entitled Evaluation of the convergent validity of the functional assessment informant record for parent - checklist with other functional behavior assessment measures with referred children in a clinic-based setting. Her Dissertation Chair was Dr. Tony Doggett.

Two Elementary Education students, **Leigh Holland** and **Christie Bond**, were recently inducted into the prestigious Society of Scholars at Mississippi State. The honor organization recognizes top university students each semester from all majors who have demonstrated

the highest standard of academic excellence and who also possess a broad and rigorous exposure to courses in the arts, sciences, and humanities. Established in 1981 with 21 charter members, the society since has inducted more than 400. A total of 23 students, representing the top five percent of students at Mississippi State University, were inducted. Leigh and Christie both received endorsements in foreign language. Each student is asked to select someone who has been instrumental in contributing to the student's success. Dr. Tina Scholtes was given the honor of introducing Leigh Holland. Christie Bond selected Karen Brown as the faculty member to introduce her.

**Chelsea Rushing**, Technology Teacher Education major and president of the Alpha Pi Chapter of Pi Omega Pi, graduated with a 4.0 grade point average and was presented a medallion at the Spring 2011 commencement.

**Sonya Sumrall**, Ed.S. graduate in School Counseling, was elected President-Elect of the Mississippi Counseling Association in November 2010 and also received the 2010 Mississippi Counseling Association Martha Garrett Research Scholarship.

**Diane Williams**, Ed.S. graduate in School Counseling, received the 2010 Mississippi Counseling Association Janie G. Rugg Career Contributor Award.

**Lasherish Derrick**, M.S. student in School Counseling, was elected Secretary/Treasurer of the Mississippi Graduate Student Counseling Association in November 2010.

**Amanda Blount**, Ed.S. and M.S. graduate in School Counseling, was elected Secretary of the Mississippi Counseling Association. Her term runs from July 1, 2010, through June 30, 2012.

**Lori Wilcher**, M.S. graduate in School Counseling and currently enrolled in the Ed.S. program in School Counseling, was elected President of the Mississippi School Counselors Association. Her term began July 1, 2010. Wilcher also received the 2010 Mississippi Counseling Association Janie G. Rugg Scholarship.

**Dana Seymour**, a graduate student in Educational Psychology, is working with the Roger F. Wicker Center for Creative Learning, which has partnered with WCBI to create a weekly morning news segment called "Learning Matters." Seymour serves as one of the "Education Experts," speaking on-air to inform parents, educators, and community members about topics including giftedness and gifted education in Mississippi and Alabama, summer educational enrichment opportunities for local families, and the transition to middle school. The goal of the show is to promote high quality learning for area youth.

**Justin Robinson**, an undergraduate in Music Education, will serve as High Brass Instructor for the Spirit Drum & Bugle Corp and then go on to serve as the Trumpet Studio teaching assistant at Penn State University majoring in Trumpet Performance in the fall. He will be studying with Dr. Langston Fitzgerald.

**Kelly Moser** and **Kelly Harkins** were honored by the Mississippi State University Office of Research and Economic Development at the 2011 Research Awards Banquet. Ms. Moser won the 2011 College of Education Graduate Student Research award, and Ms. Harkins won the 2011 Undergraduate student Research award.

**Jason Camp** was awarded one of the Mississippi Professional Educators' 2011 Student Scholarships.

**Susan Newell Johnson** was awarded the Red Red Rose A.J. and Elinor Comfort Memorial Scholarship.

The scholarship, established by the Red Red Rose educational honorary organization of the Mississippi Association of School Administrators, is awarded annually.

**Libbo Haskins** and **Kathleen Platten** were awarded Honors Undergraduate Research Fellowships for 2010 by the Judy and Bobby Schackouls Honors College. Haskins's project, with advisor Dr. Deborah Wells, was entitled Project Purple: Good Grief! Platten's project, with Dr. Kara Rosenblatt, was Self-Determination Skills Training for Students With Autism.





## SIX KINESIOLOGY STUDENTS PRESENT RESEARCH AT REGIONAL SPORTS MEDICINE CONFERENCE

In February 2011, six kinesiology students presented research at the American College of Sports Medicine Southeast Chapter Annual Meeting, held February 3-5, 2011, in Greenville, S.C. The American College of Sports Medicine is the largest sports medicine and exercise science organization in the world, and the southeast chapter is recognized as one of the most active regional chapters. The presenting students from the department included seniors Lindsey Triplett, from Carthage, MS; Jennifer Morton, from Collierville, TN; Laura Beth Roby, from Memphis, TN;

Kelly Harkins, from Brandon, MS; Eddie Neal, from Houston, MS; and graduate student Katelyn Graben, from Starkville, MS.

Triplett, Morton, and Roby presented a poster entitled "Influence of Therapeutic Horseback Riding on Gait in a Down Syndrome Participant." This research was supervised by Drs. Adam Knight and Katherine Gilliland in the department of kinesiology. Harkins presented a poster entitled "Assessment of Football Player Hip Motion During Vertical Step

Down Movement," and Neal presented a poster entitled "Assessment of Football Player Knee Motion During Vertical Step Down Movement." Both Harkins and Neal's research was supervised by Dr. Knight and Dr. Brendon Hale in the department of kinesiology, and Dr. Daniel Carruth with the Center for Advanced Vehicular Systems (CAVS). Graben presented a poster entitled "The Influence of Adventure Experience on Anticipated and Experienced Anxiety Levels Among Participants." Her research was supervised by Dr. Hale.

## THETA CHI CHAPTER OF KAPPA DELTA PI INDUCTS 123 NEW MEMBERS

During the spring 2011 semester, 123 education majors were inducted into Kappa Delta Pi Honor Society. Founded in 1911 at the University of Illinois, Kappa Delta Pi is the first and largest honor society in education, representing 800 undergraduate and professional chapters and more than 45,000 active members. Its most distinguished members over the last century have included Margaret Mead, Albert

Einstein, George Washington Carver, and current leaders in education Howard Gardner, Maxine Greene, and Carol Gilligan.

Mississippi State University's College of Education's chapter Theta Chi 214 was installed on March 10, 1958. Over 2,800 students have been initiated into the College of Education chapter since 1989 when

the chapter was revitalized by Dr. Vince McGrath and Dr. Cindy Rose. Current officers include: Cody Smith, President; Debora Brown, Vice-President; Claire Mattox, Secretary; Lindsey Crenshaw, Treasurer; Kasey Crutcher, Historian; and Ali Bainbridge, Membership. Chapter Counselors for the society are Dr. Margaret Pope, former president of Theta Chi, and Dr. Tina Scholtes.





# KAPPA DELTA PI INDUCTEES

Abbott, Kara  
Aderholt, Ashley  
Aguillard, Dana  
Alford, Brandon  
Black, Margaret  
Booker, Catherine  
Bradley, Haley  
Brasher, William  
Broom, David  
Brown, Kristen  
Brown, Natasja  
Brown, Taylor  
Butts, Molly  
Calnan, Heather  
Carey, Ryan  
Carroll, Kelley  
Carter, Melissa  
Castoria, Gianna  
Cates, Bethany  
Clardy, Hartley  
Cork, Rochelle  
Croff, Sierra  
Davis, Anna  
Davis, Jessy  
Davis, Kimberly  
Davis, Leslie  
Deavens, Stephanie  
Dedmon, Whitney  
Dunavant, April  
Edwards, Cory  
Edwards, Markus  
Ellis, Mallory  
Evans, Ashleigh  
Fierro, Emma  
Flemming, William  
Fletcher, Sara  
Freeman, Kerri  
French, Amanda  
Galistel, Brandon  
Gargus, Cory

Germann, Edey  
Ghaffarian, Sara  
Gibson, Chavonne  
Goodwin, Anne  
Gore, Taylor  
Grantham, Sarah  
Green, Megan  
Gresham, Ellen  
Halbert, Christopher  
Halford, Sarah  
Hamilton, Jessica  
Hankins, Laura  
Harmon, Deon  
Henderson, Stacy  
Herring, Lindsey  
Hillhouse, Lakin  
Huffman, Jessica  
Jackson, Kimberly  
Jackson, Tiffany  
Jefferson, Tiffany  
Johnson, Brittney  
Jones, Haley

King, Lindsey  
Knight, Kelsi  
Lewis, Criston  
Lewis, Keosha  
McConnell, Casey  
McCullough, Glen  
McCullough, Wesley  
McDonald, Karin  
McElroy, Brandon  
McMillan, Abby  
Moore, Jaclyn  
Mosley, Jonathan  
Murphree, Jessica  
Neal, Sheila  
Nichols, Gunner  
Niclosi, Elizabeth  
Nye, Phoebe  
Owen, Erica  
Parenteau, Sara  
Parker, Anna  
Peterson, Celie  
Peterson, Kelsey

Pickle, Zachary  
Pounders, Cody  
Powell, Timothy  
Prince, Brittany  
Quinn, Santana  
Ragan, Elizabeth  
Rankin, Meridith  
Reeves, Katelyn  
Roberson, Brenda  
Rushing, Savannah  
Sadler, DeAndra  
Savage, Katie  
Savoy, Molly  
Sirico, Jamie  
Smith, Coby  
Spears, Katie  
Stephenson, Katera  
Stevens, Merrin  
Stewart, Krista  
Stroud, Katie  
Stubbs, Catherine  
Swensen, Brittaney

Taheri-Araghi, Arash  
Talbot, Caroline  
Taylor, Tranita  
Thomas, LaDonna  
Thomas, Tiffany  
Thompson, Adrian  
Thrash, Emily  
Tullos, Jennifer  
Vandiver, Iver  
Walker, Hannah  
Wallace, April  
Wanner, Rebecca  
Watts, Sam  
Weathers, Garrett  
Weaver, Shemika  
Webb, Sarah  
Williams, Brasher  
Williams, Haley  
Young, Brittany  
Zachary, Jordan

# COLLEGE OF EDUCATION STUDENTS WIN SPIRIT OF STATE AWARDS

Students from the College of Education were among the recipients of the 2011 Spirit of State awards. Among the university’s premier student honors, the “Spirit of State” award recognizes exceptional personal contributions to student life at Mississippi State. Spirit of State formally honors those students who have excelled in campus involvement and service to the university, and who have made an impact on their peers and the broader campus community. Winners are recognized for their outstanding “Spirit of State” contributions at a public ceremony.

The 2011 COE Spirit of State Award winners were:

- **MEREDITH BUFORD** - junior majoring in Kinesiology from Greenwood
- **BROOKE COLLINS** - graduate student majoring in Counselor Education: Student Affairs from Shannon
- **SARA HEIMAN** - graduate student majoring in Counselor Education: Student Affairs from Seneca, Kan.
- **STEPHANIE MAXWELL** - senior majoring in Elementary Education at the Meridian campus from Meridian



## THREE TAPPED FOR MONTGOMERY FOUNDATION SCHOLARSHIPS

Three Mississippi State seniors are receiving the university's 2011 G.V. "Sonny" Montgomery Foundation Scholarships. **Shaun M. Cooper** of Newton, **David A. Jackson** of Starkville, and **Eric M. Page** of Huntsville, Alabama, are participants in MSU's Montgomery Leadership Program and are members of either the campus Army or Air Force reserve officers training corps.

The G.V. "Sonny" Montgomery Foundation was established more than a decade ago by the late U.S. representative and former Mississippi State student body president. The \$3,000 foundation awards are designed to help carry his legacy forward. The foundation works to encourage leadership development, education, excellence in scholarship, and support of various military and veteran projects. Selections for the award are made on the basis of academic achievements, as well as demonstrated leadership abilities and commitments to personal development, among other qualifications.

Cooper is a Secondary Education major and a graduate of Newton County High School in Decatur. At MSU, he has been involved with the College of Education Ambassadors, Phi Theta Kappa Alumni Society, Mississippi Model United Nations Security Council, Spectrum student organization, and Phi Kappa Phi honor society. Cooper's community service projects have included work at Baptist Centers for Cancer Care, MSU's Studio School, and an alternative spring break trip to Niceville, Fla.

A Starkville High School graduate, Jackson is a junior Kinesiology major who joined the AFROTC program in 2008. An Air Force Field Training graduate, he was in the top third of his class. In the cadet wing, he currently is training 15 cadets for this summer's Air Force Fitness Test.

Having held other cadet wing positions as physical training commander, executive officer assistant, and general military course adviser, Jackson is a deputy squadron commander for the Arnold Air Society, an honorary service organization. He becomes commander in the fall.

Page, a Virgil I. Grissom High School graduate, is an Industrial Technology major. Since entering MSU's AROTC program, he has served as both cadet and Ranger company commander. A 2009 graduate of the Army Airborne School at Fort Benning, Ga., he last year attended the Leadership Development and Assessment Course at Fort Lewis, Washington, and graduated in the top 10 percent of his regiment.

Page now serves as the cadet executive officer of the MSU Bulldog Battalion.



Cooper



Jackson



Page





## PI OMEGA PI

The Alpha Pi chapter of Pi Omega Pi, the National Honor Society for Business Teacher Education, were awarded second place in national competition for the 2010 year. Students attending the 42nd Biennial Convention held on April 21-23, 2011, in New Orleans to accept the recognition were Chelsea Rushing, president; Trevor Portrey; Brookes Mayes; Jeff Bradley; Morgan Watkins; Dorine Deason; Crystal Craven; Brian Gaddie; and Randy Williams. Brookes Mayes served as national student representative for 2009-2011 and presided at the convention. Dr. Connie M. Forde, adviser of the Alpha Pi chapter, also served as national president-elect for 2009-2011. Chelsea Rushing and Trevor Portrey also were selected to present at the student presentations section of the convention. Dr. Forde will serve as President of this national society for the 2011-2013 term.



Dr. Connie Forde congratulates Chelsea Rushing on her honor as 4.0 GPA graduate at Spring 2011 Commencement.



Chelsea Rushing and Trevor Portrey selected to present at chapter presentation portion of the 42nd Biennial National Pi Omega Pi Convention.



Front row l-r: Crystal Craven, Randy Williams, Chelsea Rushing, Brian Gaddie, Brookes Mayes. Back row l-r: Dr. Connie Forde, Morgan Watkins, Trevor Portrey, Jeff Bradley, Dorine Deason

## 2010-2011 SCHOLARSHIP RECIPIENTS

### Counseling and Educational Psychology

Erica Allen - Lowndes Co. Scottish Rite Scholarship - Holmes County  
 Christopher Eady - Dr. Richard Vasek Scholarship - Rankin County  
 Criston Lewis - Dr. Richard Vasek Scholarship - Webster County  
 Gretchen Lynum - Mann-Parker Scholarship - Kentucky  
 Trina Pittman - Rehabilitation Inc Scholarship - Webster County  
 Rebecca Roberts - Mann-Parker Scholarship - Attala County  
 Hannah Street - Mann-Parker Scholarship - Alcorn County  
 Christopher Willis - Cox, Mills and Tingle of Rehab. Inc. Scholarship - Monroe County  
 Candace Wilson - Mann-Parker Scholarship - Oktibbeha County

### Curriculum, Instruction, and Special Education

Elizabeth Barney - Nancy K. Wallner Martin Scholarship - Scott County  
 Sara Davis - Frank & Ann Chiles Family Scholarship - Prentiss County  
 Breana Jamison - McClendon and Holliman Scholarship - Lowndes County  
 Whitney Knight - E.F. Mitchell Scholarship - Copiah County  
 Bridgette Krueger - Ellen Curtis Ricci Scholarship - Georgia  
 Abby McMillan - Jack L. Beall Scholarship - Newton County  
 Melanie Nelson - Frank Webb Camp Scholarship - Newton County  
 Emily Parker - Max & Patricia Jobe Scholarship - Pike County

Patricia Pohlhaus - McClendon and Holliman Scholarship - Hinds County  
 Apryl Powell - Max & Patricia Jobe Scholarship - Leflore County  
 Sara Randall - Merrill & Carrie Hawkins Scholarship - Sunflower County  
 Megan Schmidt - Emma Grace Hayes Scholarship - Alabama  
 Caroline Spann - Susan McLaren Brooks Scholarship - Winston County  
 Katie E. Terrell - College of Education Scholarship - Pike County  
 Emily Thrash - George Walker Bush Scholarship - Neshoba County

### Instructional Systems and Workforce Development

Kimberly Davis - Ray Bishop Scholarship - Oktibbeha County  
 Crystal Price - Nan Carpenter Cairn Scholarship - Bolivar County

### Kinesiology

Anna Fulton - Nan Carpenter Cain Scholarship - Winston County  
 James Ming - Wilburn Pearson Sudduth Scholarship - Winston County  
 Cortney Swoopes - Dr. Richard Vasek Scholarship - Oktibbeha County

### Music

Ruby Brenner - Merchant & Farmers Scholarship - Oktibbeha County  
 Markus Edwards - Linda & Vincent McGrath Kappa Delta Scholarship - Rankin County

## MSU SCHOLAR SUSAN JOHNSON RECEIVES COMFORT AWARD

Susan Newell Johnson of Columbus recently received the Red Red Rose A.J. and Elinor Comfort Memorial Scholarship. The \$1,000 award was presented to her during the Mississippi Association of School Administrators Annual Conference in Jackson by Dr. Ted Alexander, Chief Executive Officer of the Lower Pearl River Valley Foundation which administers the scholarship.

Johnson, a doctoral student at Mississippi State University, stated, "I am honored to have been chosen for this prestigious scholarship award. This scholarship will assist me in continuing my Ph.D. studies in elementary, middle, and secondary education administration."

Johnson is an assistant supervisor of special education in the Columbus Municipal School District. She previously worked as a speech pathologist for the Columbus and West Point schools.

She holds a bachelor's degree in speech and language pathology from Mississippi University for Women, a master's degree in speech and language pathology from the University of Alabama, and a specialist degree in education leadership and school administration from MSU. Johnson and her husband, Al, are the parents of three children.

"The scholarship fund, established by the Red Red Rose educational honorary organization of the Mississippi Association of School Administrators, is awarded annually. A.J. Comfort was a long-time educator in Mississippi and a leader in the MASA. A.J. and Elinor, with their family, exemplified professionalism, patience, integrity, dedication, and a Christian love that was reflected in their many acts of sacrifice and giving," Alexander said.



Johnson is presented with the Comfort Award

## 2011 ALUMNUS OF THE YEAR

Paul Shane McNeill was named the 2011 Alumni Fellow for the College of Education. A 1999 kinesiology graduate, McNeill directs the Mississippi Department of Education's Office of Healthy Schools. McNeil also holds a master's degree in education from Jackson State University.



Dean Richard Blackburn and Paul Shane McNeill

## RICK YOUNG NAMED ALUMNI FELLOW

The Mississippi State University College of Education selected East Mississippi Community College President, Dr. Rick Young, as the 2010 Alumni Fellow. Young, a native of Mathiston, holds bachelor's, master's, and doctorate degrees from Mississippi State. He also attended Wood Junior College, and the University of Southern Mississippi.

Young has over 37 years of experience in education in the state of Mississippi. He began his career at Harrison Central High School in 1972, where he established a distributive education program. In 1974, he accepted a position at the Golden Triangle Campus of East Mississippi Community College and has worked in various capacities for the college over the past 35 years. Young is currently in his seventh year as president of EMCC.

Among his accomplishments, Young helped establish Mississippi's first community college distance learning lab at EMCC in the early 1990s. Dedicated to the economic development of the Golden Triangle, he was also instrumental in establishing the first Center for Manufacturing Technology Excellence in the state. He is a charter member and current president of the Mississippi Corridor Consortium comprised of Itawamba, Northeast, and Northwest Mississippi Community Colleges. The Consortium pools resources of four community colleges to enhance regional economic development.

Young credits Mississippi State with providing the knowledge base and skills needed to pursue his dreams and career goals. "Mississippi State instilled the determination and confidence to reach beyond my original goals," he said. "My professors

served as a great influence, and their willingness to nurture and inspire encouraged me to strive for greater things."

While at EMCC, Young has had the privilege to see unprecedented growth in the student population over the last decade. He has also worked with the faculty and staff on increasing program offerings and community interaction, as well as building projects and infrastructure improvements. Most recently, he introduced a tuition guarantee program enabling recent high school graduates to attend EMCC with their tuition guaranteed.

During his career, Young has been involved with many professional and community organizations. He currently serves on boards for the Mississippi Partnership Workforce Investment Act, the Columbus-Lowndes Development LINK, the Greater Starkville Development Partnership, and the Clay County Growth Alliance. He is also a member of the advisory council for the MSU College of Education, the MSU-Meridian campus, as well as the Baptist Memorial Hospital-Golden Triangle Community Advisory Board.

He and his wife Melinda, a fellow educator and MSU alumna, have two children who are also MSU alums.





# BILL AND SARA FOSTER SCHOLARSHIP ENDOWMENT ESTABLISHED



Bill Foster can recite the names of many, and remember the stories of hundreds more, Mississippi State University students. Over the course of a nearly 40-year career with MSU, Foster was a mainstay with student life before retiring in 1997 as Associate Vice President for Student Affairs.

Now, through careful estate planning, a bequest from Foster and his wife, Sara, will benefit the university. Future proceeds from the bequest will act as an extension of his long association with MSU and will be used for recruitment priorities within the Division of Student Affairs, where Foster spent the majority of his career.

"It was an easy choice to name MSU as

a beneficiary in my will since the institution provided me with an outstanding education and a wonderful career. It wasn't out of a sense of duty, but rather out of the love Sara and I have for the university," says Foster.

The enduring feelings the couple has for MSU have not changed since they first entered the then Mississippi State College in 1952. Their love of the university is shared by daughter Kathy, who is also a proud MSU graduate. Mr. Foster earned bachelor's and master's degrees in mathematics and science education from MSU, and a doctorate in higher education administration with an emphasis in student personnel services from the University of Alabama. "Sara and I have been blessed in many ways, and we are happy to repay an institution that has meant so much to us. By providing scholarships to worthy students, we are making an investment in the future of these students, our institution, and society at large," Foster explains.

Foster knows firsthand how scholarship dollars can make a difference in the lives of students. One of his primary responsibilities during his tenure as Dean

of Student Services was the recruitment of students. Following his retirement as Associate Vice President, he worked in a part-time role as a fundraiser for the division. "Since students and their parents must shoulder the burden of rising costs of higher education, it is necessary that more scholarship dollars become available to help these students who might otherwise have to attend college elsewhere," Foster said. "We want to ease this burden with our gift," he added.

Foster, a native of Tremont, joined MSU in 1960 as Coordinator of Student Activities in the Division of Student Affairs. He served in numerous leadership positions within the division, including Director of Housing and Residence Life. Earlier in his career, he taught science at Starkville High School. Sara Foster, a native of Pontotoc, worked in the Division of Student Affairs with D.W. Aiken, Vice President for the Division, and later with the Starkville Public Schools.

The Fosters fondly recall the evolution of the university. During their association, and in the years that followed, the institution has grown from a college with an enrollment of about 2,800 students to a thriving university with more than 18,000 students. "Looking back, I can honestly say that if I could do it over, I would not change a thing," Foster admits. "Working with students, and particularly the kind of students we have at MSU, is most rewarding."

In 2008, Foster was honored by the university as the ballroom in the renovated Colvard Student Union was named in his honor. The approximately 9,200-squarefoot primary meeting and group assembly area is now known as the Bill R. Foster Ballroom.

It was a fitting tribute for Foster, who served as Union Director before being promoted to Dean of Student Services in 1972. During his MSU career, he also held an adjunct appointment as an Associate Professor of Counselor Education. The Fosters look forward to attending many campus events in the Foster Ballroom and are confident their estate plans will benefit student life at MSU in perpetuity. "We fell in love with MSU from day one, and our estate gift was a natural progression of what grew out of that love," Foster says.

# ALUMNI NOTES

'65

**Bobby Jones** of Naples, Florida, is retiring as Principal of Everglades City School. Jones completed a Bachelor's degree in Physical Education in 1965.

'86

**Clay Brown** has been named Vice Chancellor for Advancement at the University of Arkansas at Monticello. He was previously Vice Chancellor for Student Affairs and University Relations. Brown earned a Master of Education degree in Counselor Education in 1986.

'87

**Anthony Wayne Stone** of Tishomingo was named the Tishomingo Chamber of Commerce 2010 Citizen of the Year. Stone was previously named the 2009 Outstanding Teacher of Tishomingo Schools. Stone earned a Bachelor's degree in Physical Education in 1987.

'91

**Melissa Crews** has received a Doctor of Education degree in public administration from the University of West Florida and is employed with the University of New Mexico. Crews completed a Master of Education degree in Counselor Education in 1991.

'95

**Jay Allen** of Raymond, Dean of Enrollment services at Hinds Community College, has received Hinds College's 3-E Award, its highest employee recognition. Allen completed a Master of Science degree in Counselor Education in 1995.

**Tony W. Cawthon** of Anderson, South Carolina, was recognized by the American College Personnel Association as a 2011 Diamond Honoree. This award is for outstanding service to the Student affairs profession. He was further recognized with the creation of the Tony W. Cawthon Professional Development Award, which will provide an annual scholarship for a current master's student in the student affairs graduate program, for their professional development. Cawthon earned a Ph.D. in Counselor Education in 1995.

'97

**Mary Shular** was named Lauderdale County School District Vocational Teacher of the Year and was elected to a 3-year term as Representative at Large for

Mississippi Professional Educators. Her term begins this year. Shular, a 7th grade teacher at West Lauderdale Middle School, earned a Master of Science degree in Technology Teacher Education in Technology in 1997.

'98

**Amy C. Ellis** of Columbus, a teacher at Sudduth Elementary School in Starkville, was one of three Mississippi teachers honored by President Obama at a White House ceremony in January with the Presidential Award for Excellence in Science, Mathematics and Engineering Mentoring. Ellis completed her Bachelor of Science degree in Elementary Education in 1993 and her Master of Science degree in Elementary Education in 1998.

**Dereck Rush** of Tyler, Texas, head football coach at John Tyler High School, has been named Coach of the Year on the Tyler Courier-Times --Telegraph All-East Texas football team. Rush earned a Bachelor of Science degree in Physical Education in 1998.

'02

**Dr. Tammy T. Webb** recently earned promotion and tenure in the Department of Human Development and Services at North Carolina Agricultural and Technical state University. Webb graduated MSU with a Ph.D. in Counselor Education in 2002.

'06

**Dennis Prescott** of McGregor, Texas, will be relocating to Las Cruces, New Mexico this year to assume the Presidency of the New Mexico State University Foundation. Prescott completed a Ph.D. in Industrial Arts Teacher Education in 2006.

'07

**Hunter Corhern** is currently pursuing a Master's degree in Wind Band Conducting at Missouri State University. He and his wife, 2010 graduate **Leah Corhern** had their first child, Nicholas, on December 9, 2010. Hunter and Leah both completed Bachelors' degrees in Music Education in 2007.

'09

**Tanika Lankford** of Meridian has published a children's book, entitled *Sweet Tea*. Lankford earned an Educational Specialist degree in 2009.

'10

**Catlin Babb** has been accepted into the Marine Corps Band Program. Babb graduated from MSU with a Bachelor's degree in Music Education in 2010.

# THE COLLEGE OF EDUCATION WISHES TO THANK THE GENEROUS DONORS WHO CONTRIBUTED \$100 OR MORE TO THE COLLEGE FROM JANUARY 1, 2010 TO MARCH 31, 2011.

Mr. & Mrs. Tommy F. Abraham, Jr.  
 Ms. Dolly D. Adams  
 Mr. Andrew & Dr. Alyce Alexander  
 Ms. Mandi D. Alexander  
 Dr. & Mrs. William James Alexander  
 Mr. & Mrs. Steven E. Allen  
 Mr. & Mrs. Hershel R. Anderson  
 Dr. Kenneth V. Anthony  
 Mr. & Mrs. Tommy Anthony  
 Mr. John N. Archer  
 Ms. Pattye R. Archer  
 Mr. & Mrs. William J. Armstrong  
 Ms. Lauren B. Ashby  
 Mr. & Mrs. Charles L. Atkinson  
 Aurora Flight Sciences Corporation  
 Mr. & Mrs. Eugene Bailey, Jr.  
 Mr. John H. Baker  
 Mr. & Mrs. Michael D. Bankston  
 Dr. Spurgeon A. Banyard  
 Mr. & Mrs. Carl W. Basden  
 Mr. & Mrs. Roy G. Bassett, Sr.  
 Mrs. Jacquelyn R. Beck  
 Mr. & Mrs. George D. Bell  
 Randy & Pat Bell  
 Dr. & Mrs. Richard A. Benton  
 Dr. & Mrs. William Billington  
 Ms. Helen W. Black  
 Mr. & Mrs. Herbert D. Black, II  
 Mr. & Mrs. Dan M. Bland  
 Ms. Helen Blanks Abraham  
 Dr. & Mrs. David C. Boles  
 Mr. & Mrs. Larry R. Bonds  
 Dr. & Mrs. Franklin T. Bonner  
 Dr. & Mrs. Drayton D. Boozer  
 Ms. Carolyn W. Bost

Mr. & Mrs. John E. Bouldin  
 Mr. & Mrs. Joe H. Bouton  
 Mr. & Mrs. Robert P. Bowman  
 Sam & Deborah Brackstone  
 Mrs. Kaye C. Branch  
 Mr. & Mrs. Ronald A. Brantley, II  
 Dr. S. Camille Branton  
 Mrs. Ann K. Brent  
 Mr. & Mrs. William F. Brewer, Jr.  
 Mr. Robert G. Brinkmann  
 Dr. & Mrs. Steven L. Britt  
 Mr. & Mrs. Anthony Brown  
 Mr. & Mrs. Charles L. Brown, Jr.  
 Mr. & Mrs. Harry M. Brown  
 Mr. William P. Brown, Jr.  
 Mr. & Dr. Donald Bryant  
 Mrs. Nancy Burdine  
 Mr. & Mrs. John T. Burks, Sr.  
 Mr. & Mrs. James A. Butler, Jr.  
 Mr. & Mrs. David F. Caldwell  
 Ms. Melissa P. Callero  
 Ms. Luerine Calmes  
 Mr. & Mrs. James L. Campbell  
 Mr. & Mrs. Rodger D. Carr  
 Mr. & Mrs. Earle B. Carrubba  
 Benjamin & Melody Carter  
 Ms. Betty J. Carter  
 Mr. Lorenzo Carter  
 Dr. Tony W. Cawthon  
 Mr. & Mrs. Charles R. Chapman  
 Mr. & Mrs. John W. Chapman  
 Mr. Kelvin Chen  
 Mr. & Mrs. B. Frank Chiles  
 Mr. Mark W. Chow  
 Clark Beverage Group, Inc.

Mr. & Mrs. Elliot J. Clark, Jr.  
 Ms. Rhonda N. Clark  
 Dr. Francis A. Clayton  
 Mr. & Mrs. Joshua Clemons  
 Mr. William A. Cobb, Jr.  
 Dr. Robert B. Cochran  
 Ms. Shunda A. Cocroft  
 Ms. Regina M. Cofer  
 Coldwell Banker Realtors  
 Dr. & Mrs. Ronald W. Cole  
 Mr. & Mrs. T.M. Concannon  
 Mr. Jerry Conerly  
 Mr. & Mrs. David B. Connelly  
 Mr. Juan A. Corrigan  
 Mr. T.E. Cotten  
 Mr. Erin C. Craig  
 Create Foundation  
 Mr. & Mrs. William F. Crick, Jr.  
 Mr. & Mrs. Morris D. Cronier  
 Dr. & Mrs. Paul M. Cuicchi  
 Dr. & Mrs. Dominic J. Cunetto  
 Ms. Jacqueline W. Cunningham  
 Ms. Lora A. Cunningham  
 Mr. & Mrs. Frank Czosek  
 Mr. & Mrs. Thomas W. Dallas  
 Ms. Connie D. Flory  
 Mr. & Mrs. Wesley H. Davis  
 Mr. & Mrs. Joel Davis  
 Ms. Carla C. Dearman  
 Mrs. Carolyn Dearman  
 Mr. Seth T. Deloach  
 Mrs. Page D. Dickerson  
 Dr. Anna Dill & Mr. Kenneth Dill  
 Mr. Charles R. Downs  
 Mr. & Mrs. David F. Drane, Sr.

Suzanne Simmons Dressel  
 Mrs. Eleanor Dudley  
 Mrs. Creath Edens  
 Mr. & Mrs. Joseph C. Edwards  
 Dr. Robert M. Ellard  
 Mr. & Mrs. Leo Elliot  
 Mr. Terrence Evans  
 Dr. Willie D. Fairley  
 Mr. & Mrs. David M. Ferriss  
 Mr. & Mrs. Larry Fielding  
 Mr. & Mrs. Artis T. Ford  
 Drs. John & Connie Forde  
 Mr. & Mrs. Mike Freed  
 Mr. & Mrs. William A. Friday  
 Mr. Ronnie L. Gamble  
 Mr. & Mrs. John E. Garner, Jr.  
 Ms. Alice P. George  
 Ms. Susan G. May  
 Mr. & Mrs. J.C. Goldman Jr.  
 Mr. & Mrs. Dexter L. Gordon, Jr.  
 Mr. Nicholas S. Gordon  
 Mr. & Dr. Charles C. Grace  
 Mr. & Mrs. Albert Grafenreed, III  
 Ms. Tess Graham  
 Mr. & Mrs. James T. Green  
 Mr. & Mrs. Truman W. Green  
 Mr. & Mrs. Billy Grubbs  
 Ms. Bessie B. Gruchy  
 Mr. & Mrs. Michael M. Haddix  
 Mr. & Mrs. Perry M. Hamill  
 Mr. Jim Hamilton  
 Mr. & Mrs. Bobby F. Hannaford  
 Ms. Laura Hardin  
 Dr. & Mrs. Dwight Hare  
 Dr. Sandra Harpole & Mr. Martin Harpole

Dr. & Mrs. Brad Harrison  
 Mr. & Mrs. Jimmy E. Hawk  
 Mrs. Carrie B. Hawkins  
 Mr. Haywood Hawkins, Jr.  
 Mrs. Linda S. Hawthorne  
 Mr. & Mrs. Willie Foster  
 Mr. Marcus D. Henley  
 Checky & Chellie Herrington  
 Mrs. Kathryn E. Hester  
 Mr. H. R. Hilderbrand  
 Mr. & Mrs. Jerry C. Hinson  
 Mrs. Frances B. Hodgins  
 Dr. V. Melissa (Lissa) Holland  
 Mrs. Margaret W. Holland  
 Mrs. Frances J. Holloway  
 Ms. Donna L. Holton  
 Warren F. & Judith G. Housley  
 Mr. & Mrs. Anse B. Howard, Jr.  
 Mr. Hunter W. Howard  
 Mr. & Mrs. Ronnie D. Hughes  
 Mr. & Mrs. Charles R. Hull  
 Mr. & Mrs. John G. Hyland, III  
 Mr. & Mrs. Jerry B. Inmon  
 Ms. Stella B. Ivy  
 Mr. & Mrs. David Jefcoats  
 Mr. & Mrs. Albert M. Jimenez  
 Dr. & Mrs. Max E. Jobe  
 Mr. & Mrs. Dennis L. Johnsey  
 Mr. & Mrs. Danny Johnson  
 Mr. Maurice Johnson  
 Dr. Thomas C. Johnson  
 Mr. & Mrs. Bower L. Johnston, Jr.  
 Dr. & Mrs. J. Felda Jones, Jr.  
 Mrs. Mary Berry Jones  
 Mr. & Mrs. Alan Kaufman



Mr. & Mrs. Michael W. Keasler  
 Ms. Dessie M. Keel  
 Mr. & Mrs. Harold J. Key  
 Mr. & Mrs. Jack D. Kirtley  
 Dr. Margaret S. Kolb  
 Mr. & Mrs. William J. Korlath  
 Mrs. Melissa Recker Lamar  
 Mrs. Billie C. Lambert  
 Mrs. Burlene Lamberth  
 Ms. Lisa Landrum  
 Ms. Maurine B. Langley  
 Dr. Bill Lee  
 Mr. Stanley W. Lee  
 Mrs. Sharon P. Leggett  
 Mrs. Phyllis H. Lewellyn  
 Drs. Harvey & Di Ann Lewis  
 Mr. & Mrs. Thomas P. Lewis  
 Mr. Harry P. Llull  
 Mr. & Mrs. Thomas B. Lott  
 Mr. & Mrs. Malcolm A. Love  
 Dr. Sam T. Wilkes & Dr. Rebecca  
 Love-Wilkes  
 Mr. Connor W. Lowery  
 Ms. Janice Magers  
 Mr. & Mrs. Leamon E. Malone  
 Dr. Eugene F. Martin & Ms. Pandra Kay  
 Evans  
 Mr. & Mrs. Jimmy O. Mayfield  
 Mr. & Mrs. Charles L. McBride, Jr.  
 Mr. & Mrs. Sylvester McClain  
 Ms. Kathryn R. McClendon  
 Mr. & Mrs. W. S. McCool  
 Mrs. Oneda S. McCuiston  
 Mr. & Mrs. R. Sammy McDavid  
 Ms. Jackie S. McGee

Dr. Ronnie L. McGehee  
 Dr. Wynema McGrew  
 Mark P. McLain & Lisa Dismuke  
 McLain  
 Mr. William C. McLauchlin  
 Ms. Allison C. McMahon  
 Mr. & Mrs. Paul S. McNeill  
 Mr. & Mrs. Joseph A. Middlebrooks  
 Mid-South Ford Dealers Association  
 Mr. & Mrs. James L. Milner  
 Mr. & Mrs. Richard D. Mitchell  
 Mrs. Virginia H. Montgomery  
 Mr. & Mrs. Charles B. Moody  
 Mr. & Mrs. Douglas D. Moore  
 Dr. & Mrs. James E. Moore  
 Ms. Norma J. Moore  
 Mr. & Mrs. David B. Moulder  
 Mrs. Martha J. Mullins  
 Mr. & Mrs. George E. Murphy, Jr.  
 Mr. John F. Nabors  
 Mr. & Mrs. Jorge E. Navarrete  
 Mr. & Mrs. Jeffrey D. Neaves  
 Dr. Michael J. Gandy & Dr. Susan M.  
 Neral  
 Mr. & Mrs. Tan H. Nguyen  
 Dr. Janice I. Nicholson  
 Mr. Joseph B. Odom  
 Oktibbeha County Co-op  
 Dr. Fred M. Page  
 Mr. & Mrs. Gregory C. Page  
 Mr. & Mrs. Hugh R. Parham  
 Mr. & Mrs. Mike Parker  
 Mr. Michael L. Parson  
 Dr. Linda B. Pates  
 Dr. Thomas O. Peavy, Sr.

Dr. & Mrs. T. Fred Perkins  
 Mr. & Mrs. Kenneth L. Petre  
 Dr. & Mrs. Robert L. Phillips Jr.  
 Pilot Club of Louisville  
 Mr. William K. Plunkett  
 Mrs. Ann H. Poche  
 Mr. Edward E. Poole  
 Mr. William J. Pope, Jr.  
 Dr. Sarah C. Portis  
 Ms. Jill Powell  
 Dennis A. & Ruth H. Prescott  
 Ms. Holly M. Preston  
 Mr. & Mrs. Michael L. Price  
 Dr. Ava F. Pugh  
 Mr. & Mrs. Christopher A. Quillian  
 Mr. Thomas C. Randle  
 Mr. Richard L. Rankin  
 Dr. & Mrs. Wayne T. Ray  
 Mr. & Mrs. Joseph R. Reed  
 Mr. & Mrs. Keith H. Remy  
 Dr. Jerry L. Reynolds  
 Mr. Armando T. Ricci, Jr.  
 Rick's Furniture  
 Mr. & Mrs. Barrett F. Robinson  
 Mr. & Mrs. Alexis G. Romanoff  
 Mr. & Mrs. Ben Rosenkrans, III  
 Mrs. Carolyn B. Ross  
 Mr. & Mrs. Brian R. Roundtree  
 Mr. & Mrs. Earl L. Routh, Jr.  
 Mr. & Mrs. David E. Rozier, Jr.  
 Ms. Cynthia G. Ruff  
 Mrs. Rebecca M. Ruggles  
 Mr. & Mrs. Jeffrey B. Rupp  
 Mr. & Mrs. Joel Rutherford  
 Ms. Katrice D. Rutherford

Mr. & Mrs. Michael Ryan  
 Mr. James Sampsell & Dr. Jacquelyn  
 Sampsell  
 Mrs. Pamela M. Sanders  
 Mr. Manfred Saylor  
 Mrs. Sara M. Scales  
 Ms. Wanda H. Seals  
 Dr. Stephen D. Shaffer  
 Mr. William H. Sheffield  
 Ms. Christen B. Sibley  
 Ms. Cynthia M. Simmons  
 Mr. & Mrs. Darren W. Sims  
 Mr. & Mrs. James R. Sims  
 Mrs. Linda K. Slaughter  
 Dr. Peggy S. Slaughter  
 Dr. Lamon H. Small  
 Dr. & Mrs. David B. Smith  
 Mr. Cade Smith  
 Mr. James G. Smith  
 Mr. & Mrs. Steve Smith  
 Mr. & Mrs. Willie J. Sones  
 Mr. Marvin F. Spencer  
 Mrs. Lady A. Stone-Bruce  
 Mr. & Mrs. Clyde E. Stuart, Jr.  
 Dr. & Mrs. Arthur D. Stumpf  
 Dr. Reginald L. Sykes  
 Mrs. Gracy Taylor  
 Ms. Wanda A. Taylor  
 Mrs. Dorothy Y. Tennyson  
 Dr. Thomas C. Terrell, Jr.  
 Rev. & Mrs. Morris K. Thompson, Jr.  
 Dr. Roma L. Thorn  
 Mr. & Mrs. James A. Thorndike, Jr.  
 Mr. & Mrs. David S. Tiffin  
 T-Mart Inc.

Mr. & Mrs. Malcolm D. Todd  
 Dr. & Mrs. Robert T. Tomlinson  
 Mr. Kyle E. Touchstone  
 Bill & Maurica Turner  
 Dr. & Mrs. Harold L. Underwood  
 Mr. & Mrs. James M. Vance  
 Ms. Virginia Varela  
 Mr. & Mrs. Scott M. Vaughn  
 W.K. Kellogg Foundation  
 Mr. & Mrs. Lake W. Waldrop  
 Mr. & Mrs. Alfred L. Walker, Jr.  
 Dr. & Mrs. Ronald D. Walker  
 Ms. Jean W. Walrath  
 Waltmon Frame & Body Shop  
 Mr. & Mrs. Clayborn Walton Jr.  
 Mr. & Mrs. Andrew B. Watkins  
 Mrs. Marie C. Watson  
 Dr. Debbie & Mr. David C. Wells  
 Mrs. Susan W. Wells  
 Dr. & Mrs. Robert M. West  
 Ms. Elizabeth A. White  
 Dr. Carolyn C. Williams  
 Mr. & Mrs. John D. Willis  
 Mr. Daniel M. Wilson  
 Mr. & Mrs. Hugh W. Winstead  
 Mr. & Mrs. Joseph E. Winterscheidt  
 Mrs. Kati Lewis Woodard  
 Mr. Van R. Worley, Jr.  
 Mr. & Mrs. Julian H. Wright  
 Mr. & Mrs. Marvin Wright  
 Mr. & Mrs. Stanley H. Wright  
 Ms. Virginia A. Wright  
 Mr. & Mrs. Billy E. Wynne  
 Dr. Fred R. Young  
 Mr. Rickey R. Young

## SEND US YOUR NEWS!

We would like to include news of alumni accomplishments in each issue of the College of Education newsletter. Please use the form below to send us information about career changes, recognitions received and other news you would like to share with your former classmates, friends and professors.

**Clip and mail to:** Dr. Terry Jayroe, P.O. Box 9710, Mississippi State, MS 39762.

Name: \_\_\_\_\_

E-mail address: \_\_\_\_\_

Address: \_\_\_\_\_

City: \_\_\_\_\_ State: \_\_\_\_\_ ZIP: \_\_\_\_\_

Home phone: \_\_\_\_\_

Company: \_\_\_\_\_ Title: \_\_\_\_\_

Company address: \_\_\_\_\_

Company phone: \_\_\_\_\_ Company fax: \_\_\_\_\_

Graduation years: \_\_\_\_\_ Major: \_\_\_\_\_

Your news: \_\_\_\_\_

---



---



---



---

The College of Education newsletter is published once a year for the alumni and friends of the College of Education at Mississippi State University. If you would like more information about the programs in the College of Education, have any questions or suggestions, or if you have a submission for the newsletter, please contact:

**Dr. Terry Jayroe, Associate Dean and Professor, Dean of Education | Box 9710 | Mississippi State, MS 39762 | telephone: (662) 325-7069**

**fax: 662-325-8784 | e-mail: [tbj2@ra.msstate.edu](mailto:tbj2@ra.msstate.edu)**

Discrimination based upon race, color, religion, sex, national origin, age, disability, or veteran's status is a violation of federal and state law and MSU policy and will not be tolerated.

Discrimination based upon sexual orientation or group affiliation is a violation of MSU policy and will not be tolerated.



**MISSISSIPPI STATE  
UNIVERSITY  
FOUNDATION**

YES! I want to support Mississippi State University and the College of Education this year! Enclosed is my gift of \_\_\_\_\_

Name \_\_\_\_\_

Spouse name \_\_\_\_\_

Address \_\_\_\_\_

City \_\_\_\_\_ State \_\_\_\_\_ ZIP \_\_\_\_\_

Phone (home) \_\_\_\_\_ - \_\_\_\_\_ - \_\_\_\_\_ (work) \_\_\_\_\_ - \_\_\_\_\_ - \_\_\_\_\_

E-mail \_\_\_\_\_

MSU class year(s) \_\_\_\_\_ Spouse class year(s) \_\_\_\_\_

Please return this form and your contribution to: MSU Foundation, P.O. Box 6149, Mississippi State, MS 39762 or make a contribution online at [www.msufoundation.com](http://www.msufoundation.com).

☐ Enclosed is my gift of: ☐ \$1,000 ☐ \$500 ☐ \$250 ☐ \$100

☐ Other amount: \$ \_\_\_\_\_

**Payable by:** ☐ Check to the MSU Foundation, Inc.

☐ One-time credit card charge

☐ **I would like to set up a monthly credit card gift of: \$ \_\_\_\_\_**  
to begin on \_\_\_\_\_ (date), that will continue until I notify  
otherwise. *(Payment will be charged on the 15th of each month and can  
be cancelled with a 30-day notice.)*

☐ **My employer will match my gift.** Employer \_\_\_\_\_  
Employer's address \_\_\_\_\_

**Please charge my:** ☐ VISA ☐ MasterCard ☐ AMEX Exp. Date \_\_\_\_\_

Card No. \_\_\_\_\_

3-digit verification code \_\_\_\_\_ Signature \_\_\_\_\_

Please designate my contribution to:

**SPI I/DMED**









# MISSISSIPPI STATE UNIVERSITY<sup>TM</sup>

College of Education  
Box 9710  
Mississippi State, MS 39762

Nonprofit Organization  
U.S. Postage  
PAID  
Jackson, MS  
Permit No. 134